

INSTRUMENT APPROACH CHART - ICAO AERODROME ELEV 65ft
HEIGHT RELATED TO THR RWY 20 - 65ft

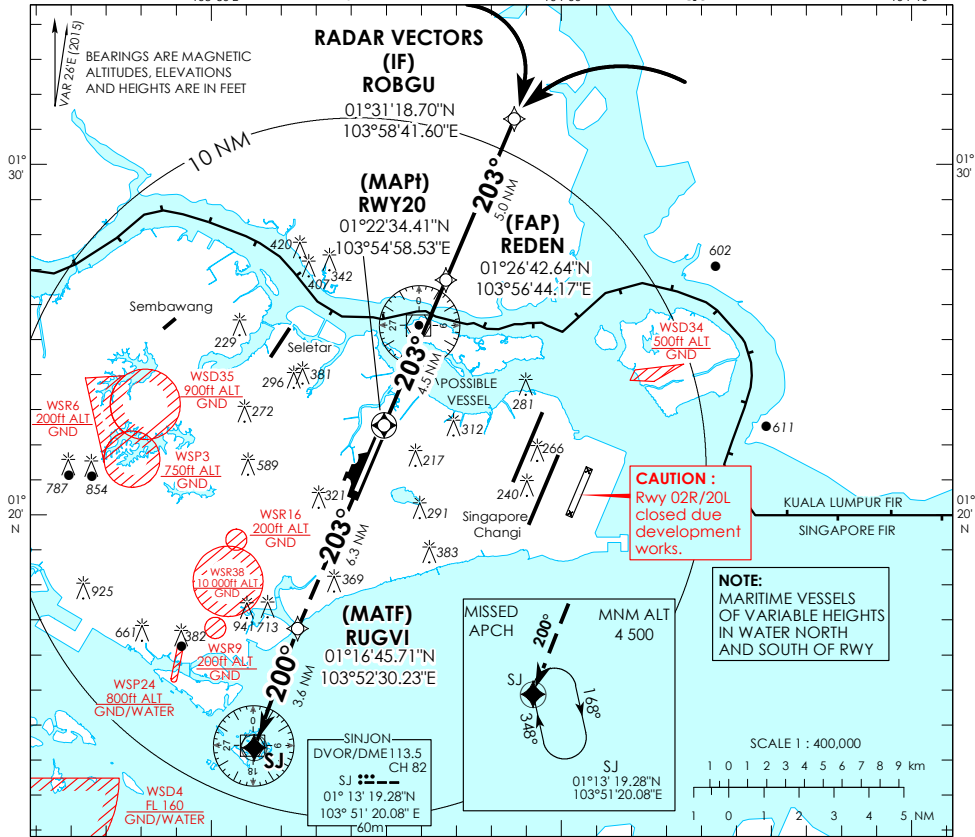
3500
+ ARP
25 NM

MSEA 25 NM from PAYA LEBAR ARP

RADAR REQUIRED

ATIS Paya Lebar 148.9
Singapore APP 120.3
Paya Lebar APP 119.9 298.0
Seletar APP 126.025
Paya Lebar TWR 118.05 263.1
Ground Control 130.8 296.0

SINGAPORE/ PAYA LEBAR RNAV (GNSS) RWY 20



Transition Level : FL 130
Transition Alt : 11 000

MISSED APPROACH:
CLIMB DIRECT TO RUGVI.
TURN LEFT 200° TO SJ TO JOIN THE HOLDING AT 4500FT OR ABOVE OR AS DIRECTED BY ATC.

MINIMUM TEMPERATURE FOR BARO-VNAV APPROACHES: -23°C

RDH 50

2.9° slope 203°

1010 (945)

CIRCLING NOT AUTHORIZED

ELEV 65 (THR RWY 20)

Category of Aircraft	OCA (OCH)						
	A	B	C	D			
LNAV/VNAV	2.5%	420 (355)					
LNAV	2.5%	420 (355)					
Fix	ROBGU	REDEN	RWY20	RUGVI	SINJON		
Altitude (Height)	1500 (1435)	1500 (1435)	420 (355)	1030 (965)	1580 (1515)		
Speed	knots	80	100	120	140	160	180
FAP - MAP1 4.5 nm	min : s	3 : 23	2 : 42	2 : 15	1 : 56	1 : 41	1 : 30
Rate of descent/GS	ft/min	410	513	615	718	821	923