

**INSTRUMENT APPROACH CHART - ICAO** AERODROME ELEV 65ft  
HEIGHT RELATED TO THR RWY 20 - 65ft

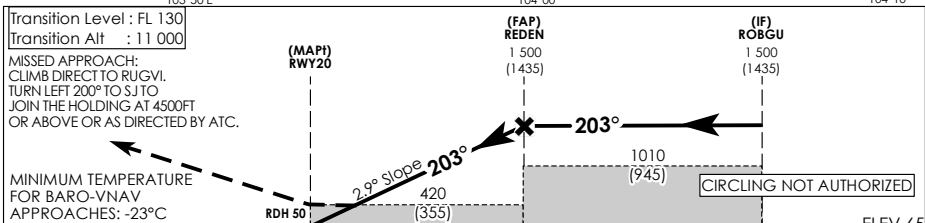
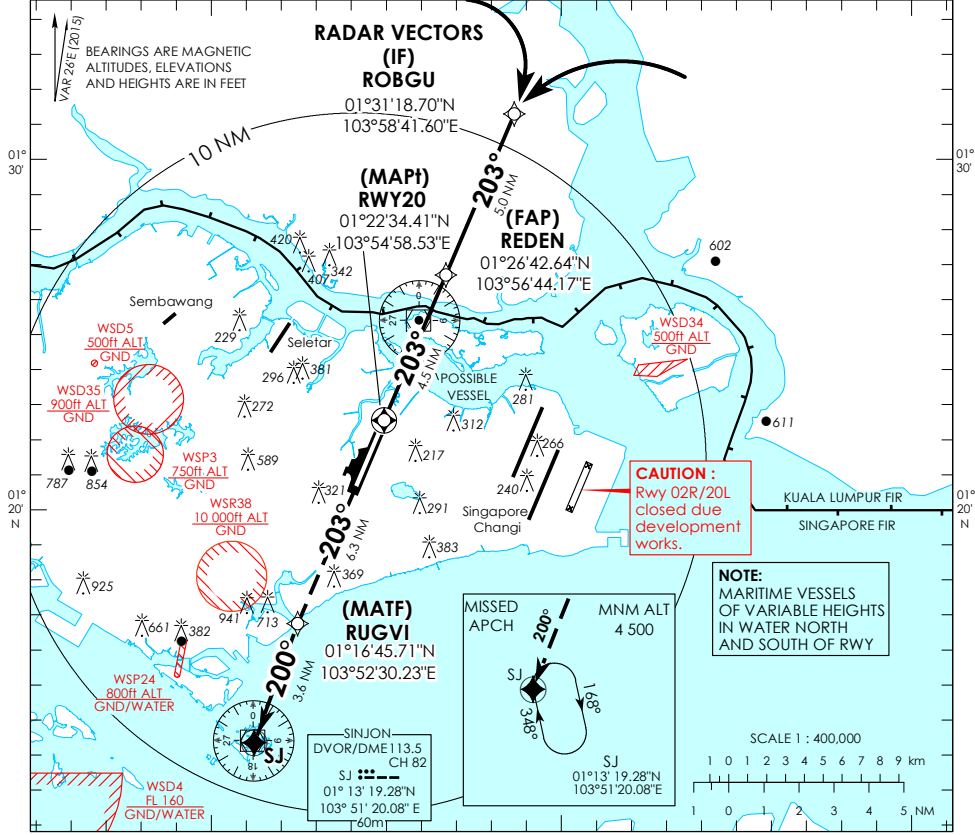
3500  
+  
ARP  
25 NM

MSEA 25 NM from PAYA LEBAR ARP

**RADAR REQUIRED**

ATIS Paya Lebar 148.9  
Singapore APP 120.3  
Paya Lebar APP 119.9 298.0  
Seletar APP 126.025  
Paya Lebar TWR 118.05 263.1  
Ground Control 130.8 296.0

**SINGAPORE/ PAYA LEBAR RNAV (GNSS) RWY 20**



NAUTICAL MILES FROM THR RWY 20

		OCA (OCH)					
Category of Aircraft		A	B	C	D		
LNAV/VNAV	2.5%		420 (355)				
LNAV	2.5%		420 (355)				
Fix		ROBGU	REDEN	RWY20	RUGVI	SINJON	
Altitude (Height)	1500 (1435)	1500 (1435)	420 (355)	1030 (965)	1580 (1515)		
Speed	knots	80	100	120	140	160	180
FAP - MAP1 4.5 nm	min : s	3 : 23	2 : 42	2 : 15	1 : 56	1 : 41	1 : 30
Rate of descent/GS	ft/min	410	513	615	718	821	923