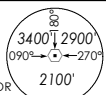


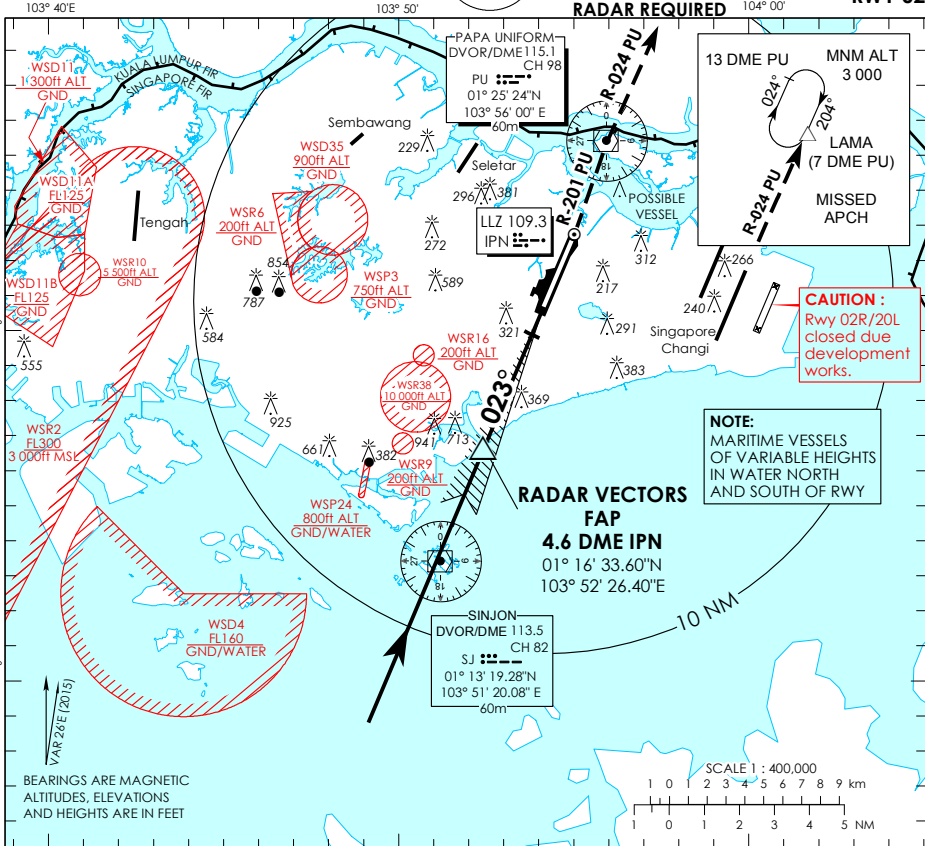
INSTRUMENT APPROACH CHART - ICAO

AERODROME ELEV 65ft
HEIGHT RELATED TO
THR RWY 02 - ELEV 43ft
MSA 25 NM
from PAPA UNIFORM DVOR



ATIS Paya Lebar	148.9
Singapore APP	120.3
Paya Lebar APP	119.9 298.0
Seletar APP	126.025
Paya Lebar TWR	118.05 263.1
Ground Control	130.8 296.0

SINGAPORE/PAYA LEBAR IPN ILS/DME RWY 02

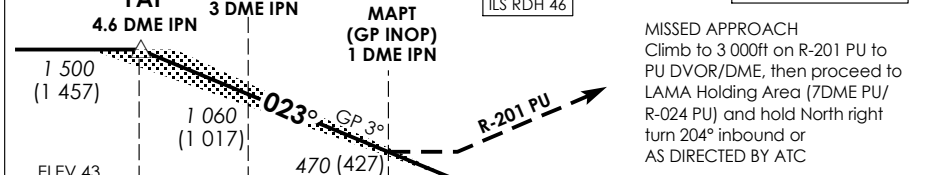


BEARINGS ARE MAGNETIC ALTITUDES, ELEVATIONS AND HEIGHTS ARE IN FEET

SCALE 1 : 400,000

VAR 24E (2015)

10 NM



MISSED APPROACH
Climb to 3000ft on R-201 PU to PU DVOR/DME, then proceed to LAMA Holding Area (7DME PU/ R-024 PU) and hold North right turn 204° inbound or AS DIRECTED BY ATC

OCA (OCH)				
Category of Aircraft	A	B	C	D
Straight-in	CAT I ILS	178 (135)	188 (145)	198 (155)
	GP INOP	470 (427)		
Distance	4 DME	3 DME	2 DME	
Altitude (Height)	1300 (1257)	1060 (1017)	740 (697)	
Speed	knots	70	120	150
FAF - MAPT 3.6nm	min : s	3 : 06	1 : 48	1 : 27
Rate of descent/GS	ft/min	370	635	795