

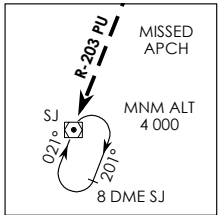
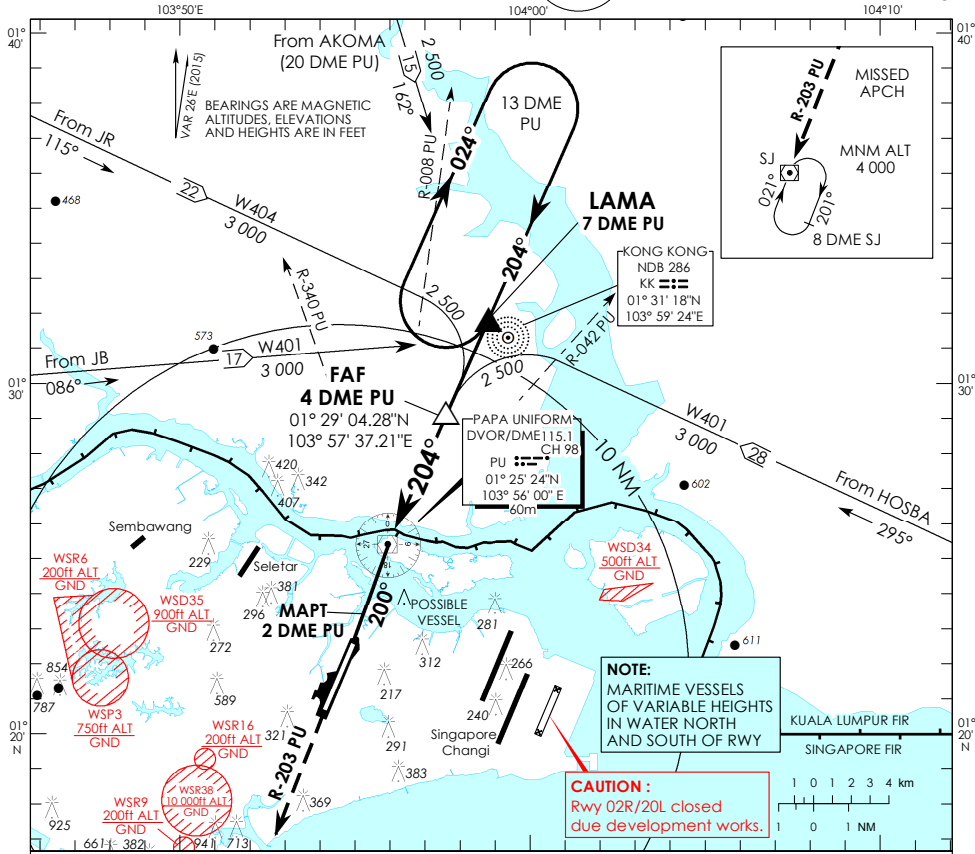
**INSTRUMENT  
APPROACH  
CHART - ICAO**

AERODROME ELEV 65ft  
HEIGHT RELATED TO  
AD ELEV - 65ft



APP 120.3  
119.9  
126.025  
TWR 118.05

**SINGAPORE/  
PAYA LEBAR  
PU DVOR/DME  
RWY 20**

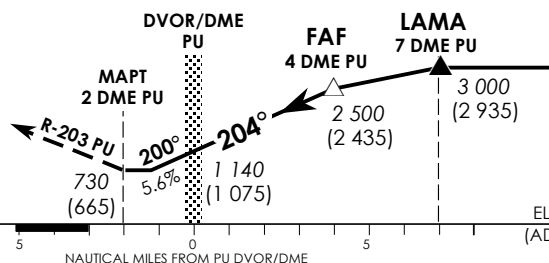


**NOTE:**  
MARITIME VESSELS  
OF VARIABLE HEIGHTS  
IN WATER NORTH  
AND SOUTH OF RWY

**CAUTION:**  
Rwy 02R/20L closed  
due development works.

Transition Level : FL 130  
Transition Alt : 11 000

**MISSED APPROACH**  
Climb to 4 000ft on R-203 PU to SJ  
DVOR/DME and hold South right  
turn 021° inbound or  
AS DIRECTED BY ATC



OCA (OCH)				
Category of Aircraft	A	B	C	D
Straight-in	730 (665)			
Distance	3 DME	2 DME	1 DME	PU DVOR/DME
Altitude (Height)	2160 (2095)	1820 (1755)	1480 (1415)	1140 (1075) 800 (735)
Speed	knots	70	120	150 185
FAF - MAPT 6nm	min : s	5 : 09	3 : 00	2 : 24 1 : 57
Rate of descent/GS	ft/min	370	635	795 980