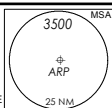


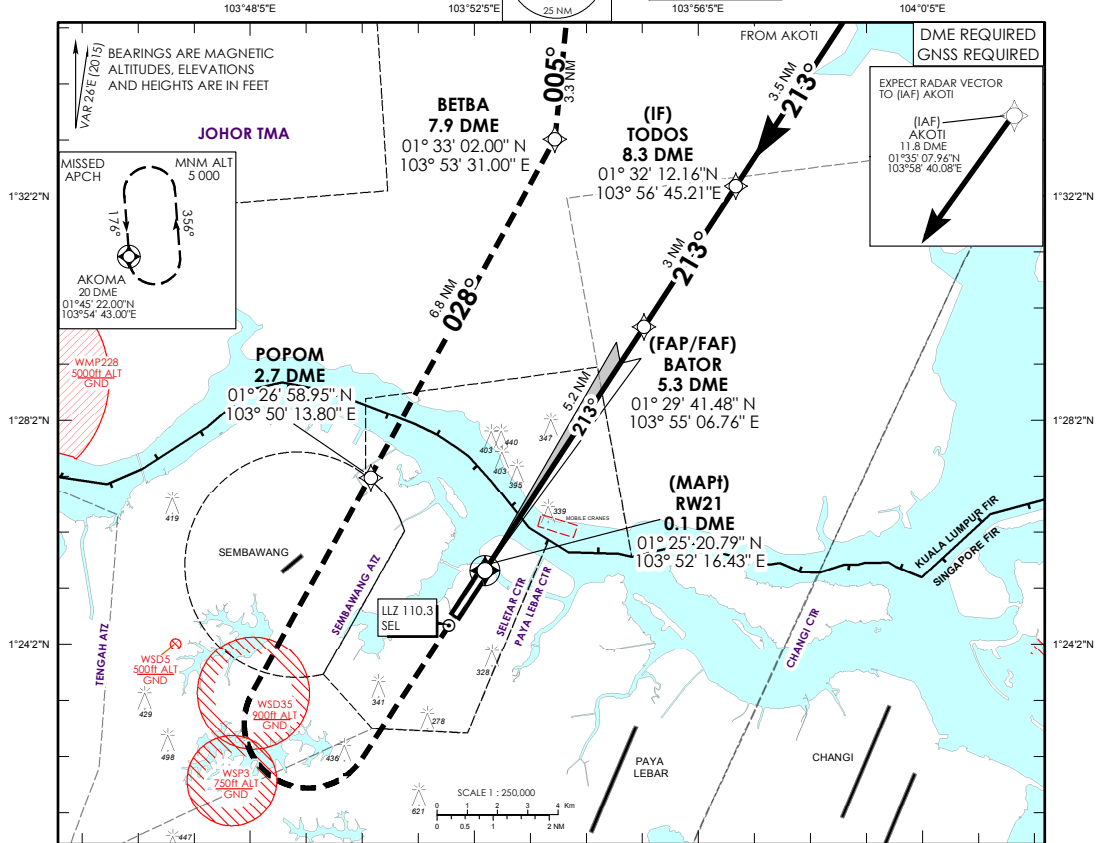
INSTRUMENT APPROACH CHART - ICAO

**AD ELEV 46 ft
HEIGHT RELATED TO
THR RWY 21 - ELEV 17 ft**



APP	120.3
TWR	126.025
	118.45
	270.4

**SINGAPORE/SELETAR
SEL ILS RWY 21**



- Note 1:** This procedure requires a missed approach climb gradient of 5% (304 ft/NM) until passing 5,000ft. Pilot to inform ATC if unable. For aircraft which can only achieve a 2.5% (152 ft/NM) climb gradient, the CAT I OCA (OCH) is 850ft (830ft) and GP INOP OCA (OCH) is 1080ft (1060ft).
- Note 2:** No turn prior to MAPt.
- Note 3:** Pilots to maintain 20° bank angle and MAX IAS 160kts during turning missed approach.
- Note 4:** In VMC, default shall be Visual Approach. ATC will clear aircraft on ILS Approach subject to air traffic and meteorological conditions.

MISSED APPROACH

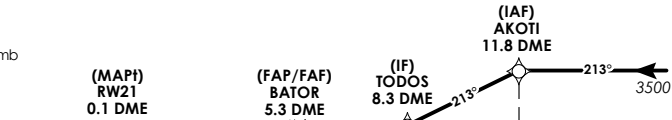
Climb on RWY heading to 1500ft, then turn right to POPOM to maintain 2000ft.
At POPOM, continue climb to BETBA, then turn left to maintain 5000ft by TATIN.
After TATIN to join holding at AKOMA or as directed by ATC.

For loss of RNAV capabilities

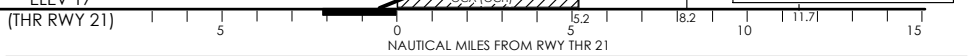
Climb on RWY heading to 1500ft at 5% climb gradient and request ATC instructions.

Transition Level : FL 130
Transition Alt : 11 000

ILS/DME co-located with GP
ILS RDH 54
ELEV 17



CIRCLING NOT AUTHORIZED



		OCA (OCH)		
Category of Aircraft		A	B	C
CAT I ILS	5%	380 (360)	390 (370)	400 (380)
GP INOP	5%		650 (630)	

Speed	knots	70	100	130	160
FAF - MAPt 5.2nm	min : s	4:27	3:07	2:24	1:57
Rate of descent	ft/min	435	620	805	990

ILS RWY 21

Designator	Path Term	Waypoint Name	Fly-Over	Course °M (°T)	Magnetic Variation	Distance (NM)	Turn Dir	Altitude	Speed (IAS)	VPA/ TCH(ft)	Navigation Spec
ILS RWY 21	IF	AKOTI (IAF)	-	-	-	-	-	A035+	-	-	RNP APCH
ILS RWY 21	TF	TODOS (IF)	-	213 (213.5)	-0.5	3.5	-	A020@	-	-	RNP APCH
ILS RWY 21	TF	BATOR (FAP/FAF)	-	213 (213.5)	-0.5	3.0	-	A020@	-	-	RNP APCH
ILS RWY 21	TF	RW21 (MAPt)	Y	213 (213.5)	-0.5	5.2	-	-	-	-3.5'/ 54	RNP APCH
ILS RWY 21	CA	-	-	213 (213.5)	-0.5	-	-	A015	160	-	RNP APCH
ILS RWY 21	DF	POPOM	-	-	-	-	-	A020-	-	-	RNP APCH
ILS RWY 21	TF	BETBA	-	028 (028.5)	-	6.8	L	A040+	-	-	RNP APCH
ILS RWY 21	TF	TATIN	-	005 (005.5)	-0.5	3.3	-	A050+	-	-	RNP APCH
ILS RWY 21	TF	AKOMA	Y	005 (005.5)	-0.5	9.0	-	A050+	-	-	RNP APCH

Waypoint	Coordinates	
	Latitude	Longitude
AKOTI (IAF)	01° 35' 07.96" N	103° 58' 40.08" E
TODOS (IF)	01° 32' 12.16" N	103° 56' 45.21" E
BATOR (FAP/FAF)	01° 29' 41.48" N	103° 55' 06.76" E
RW21 (MAPt)	01° 25' 20.79" N	103° 52' 16.43" E
POPOM	01° 26' 58.95" N	103° 50' 13.80" E
BETBA	01° 33' 02.00" N	103° 53' 31.00" E
TATIN	01° 36' 19.53" N	103° 53' 50.48" E
AKOMA	01° 45' 22.00" N	103° 54' 43.00" E