

**STANDARD ARRIVAL CHART
RNAV (GNSS) -
INSTRUMENT (STAR)**

ACC 133.25
APP 124.6 / 120.3
ARR 119.3
TWR 118.6 / 118.25

TRANSITION ALTITUDE
11 000ft

D-ATIS AP ID-WSSS
128.6

**SINGAPORE/Singapore Changi
RWY 20R/C
LELIB THREE BRAVO ARRIVAL
LELIB 3B**

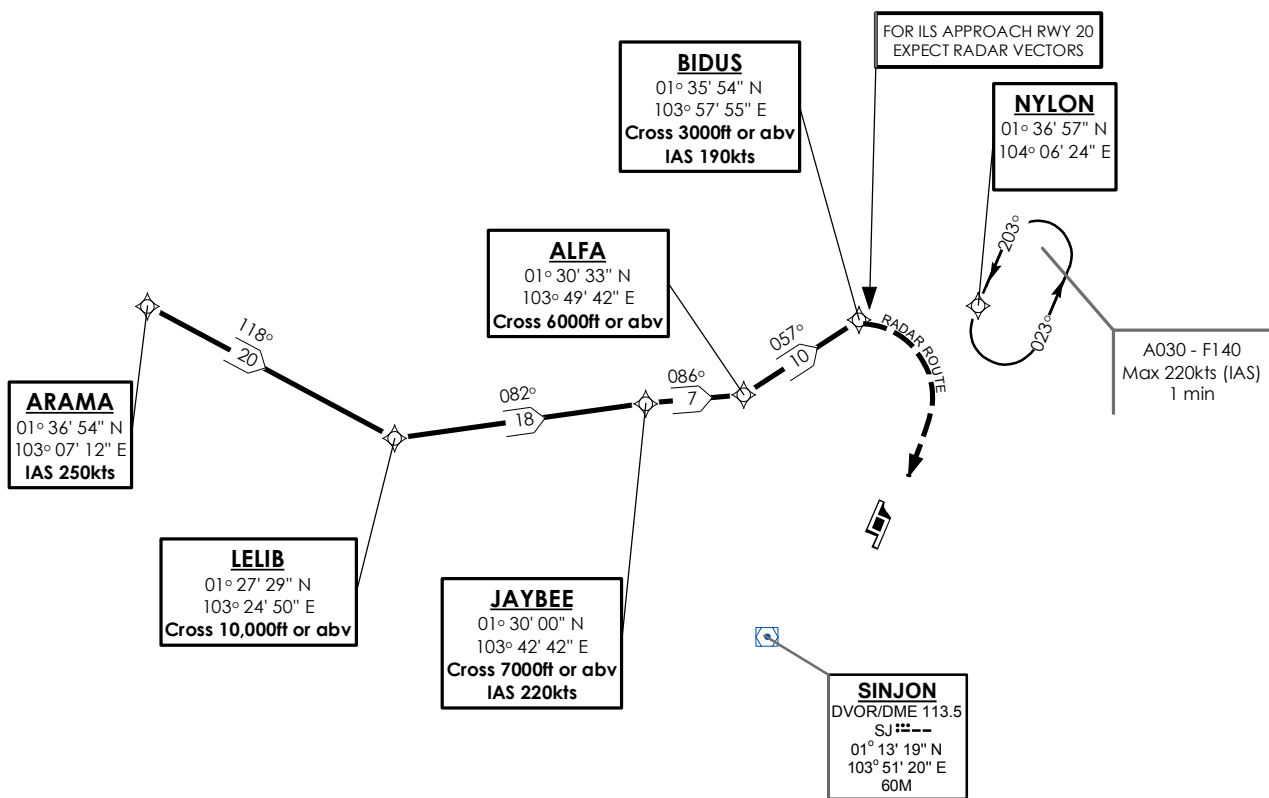
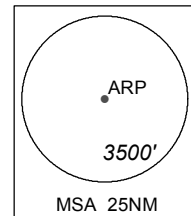
ELEV, ALT IN FEET
BEARINGS, TRACKS AND
RADIALS ARE MAGNETIC
VAR 26°E (2015)

DISTANCES IN NM

NOTE: RADAR REQUIRED

NOTE: RNAV-1 NAVIGATION SPECIFICATION GNSS REQUIRED

NOTE: REFER TO BACK PAGE FOR
- FORMAL AND TABULAR DESCRIPTIONS
- RADIO COM FAILURE PROCEDURES



For flight landing at Singapore Changi Airport, pilots are to request for the STAR from Singapore ATC when the flight is within 120 DME SJ and RWY 20 is in use. Flight shall still remain under the control of WMKK ATC.

NOT TO SCALE

LELIB 3B (STAR) RNAV GNSS RWY 20R/20C - DESCRIPTIONS

Formal & Abbreviated Descriptions

| Formal Description | Abbreviated Description | Path Terminator | Fly-Over required |
|--|---------------------------|-----------------|-------------------|
| From ARAMA, speed 250kts. To LELIB at or above 10000ft, turn left. To JAYBEE at or above 7000ft, speed 220kts, turn right. To ALFA at or above 6000ft, turn left. To BIDUS at or above 3000ft, speed 190kts. | ARAMA [K250] - | IF | N |
| | LELIB [A100+; L] - | TF | N |
| | JAYBEE [A070+; K220; R] - | TF | N |
| | ALFA [A060+; L] - | TF | N |
| | BIDUS [A030+; K190] | TF | N |

Tabular Descriptions

| Path Term | Waypoint Name | Fly-Over | Course °M(°T) | Magnetic Variation | Turn Direction | Altitude | Speed Limit | Navigation Spec |
|-----------|---------------|----------|---------------|--------------------|----------------|----------|-------------|-----------------|
| IF | ARAMA | - | - | -0.5 | - | - | K250 | RNAV1 |
| TF | LELIB | - | 118(118.5) | -0.5 | L | A100+ | - | RNAV1 |
| TF | JAYBEE | - | 082(082.0) | -0.5 | R | A070+ | K220 | RNAV1 |
| TF | ALFA | - | 086(086.5) | -0.5 | L | A060+ | - | RNAV1 |
| TF | BIDUS | - | 057(057.1) | -0.5 | - | A030+ | K190 | RNAV1 |

RADIO COMMUNICATIONS FAILURE PROCEDURE

| | |
|----------|--|
| 1 | SET TRANSPONDER TO MODE A/C CODE 7600 |
| 2 | <p>When cleared via LELIB 3B by Singapore ATC</p> <p>(a) Maintain last assigned flight level or altitude and proceed on LELIB 3B to BIDUS, then direct to NYLON</p> <p>(b) From NYLON commence descent and carry out appropriate landing procedure for RWY 20 as close as possible to EAT or ETA</p> <p>(c) If unable to effect a landing, refer to Singapore AIP for missed approach procedure</p> |
| 3 | <p>No clearance or instruction received from Singapore ATC</p> <p>- Refer to Singapore AIP for radio communications failure procedure</p> |