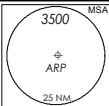


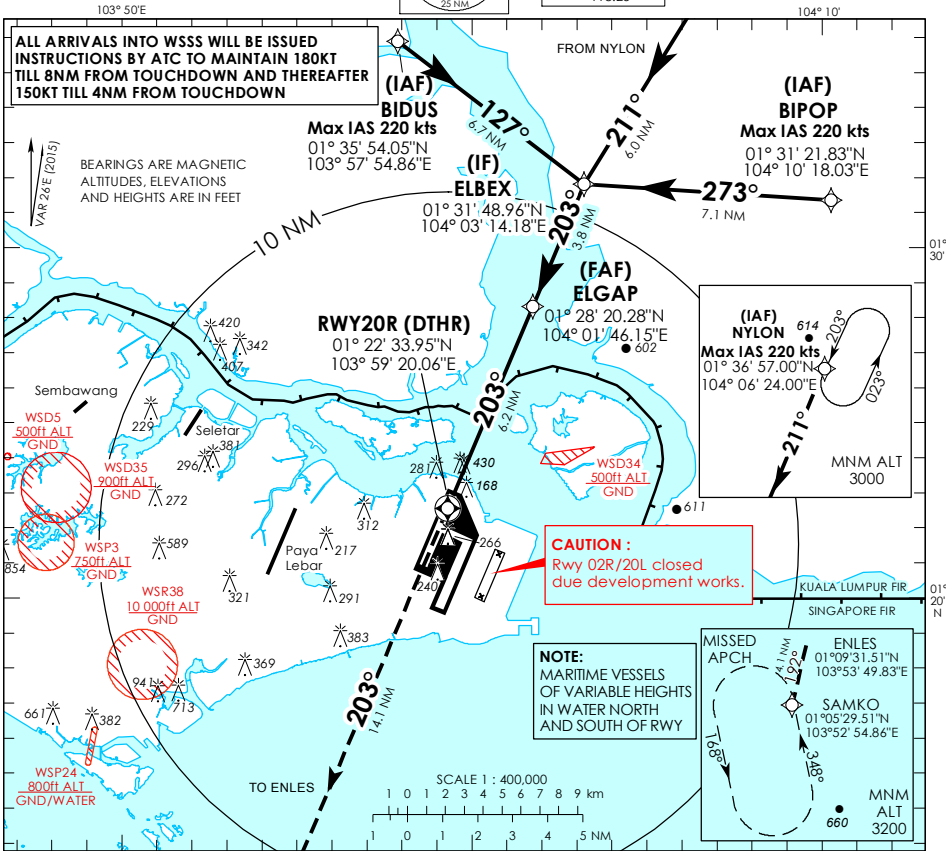
**INSTRUMENT  
APPROACH  
CHART - ICAO**

AERODROME ELEV **22ft**  
HEIGHT RELATED TO  
DTHR RWY 20R - ELEV **13ft**



D-ATIS AP ID WSSS	128.6
APP	120.3
TWR	119.3
	118.6
	118.25

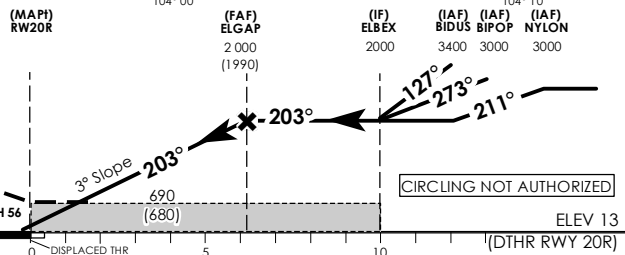
**SINGAPORE/  
SINGAPORE CHANGI  
RNAV (GNSS) RWY 20R**



Transition Level : FL 130  
Transition Alt : 11 000

MISSED APPROACH:  
CLIMB DIRECT TO ENLES.  
TURN LEFT TO SAMKO TO  
JOIN THE HOLDING AT  
3200FT OR ABOVE OR AS  
DIRECTED BY ATC.

MINIMUM TEMPERATURE  
FOR BARO-VNAV  
APPROACHES: 5°C



Category of Aircraft	NAUTICAL MILES FROM DTHR RWY 20R							
	A	B	C	D				
LNAV/VNAV	690 (680)							
LNAV	690 (680)							
Fix	BIDUS	NYLON	BIPOP	ELBEX	ELGAP	RW20R	ENLES	SAMKO
Altitude (Height)	3400 (3387)	3000 (2987)	3000 (2987)	2000 (1987)	2000 (1987)	690 (680)	2180 (2167)	3200 (3187)
Speed	knots	80	100	120	140	140	160	180
FAF - MAP1 6.2 nm	min : s	4 : 39	3 : 44	3 : 06	2 : 40	2 : 20	2 : 04	
Rate of descent/GS	ft/min	425	531	637	743	849	955	