

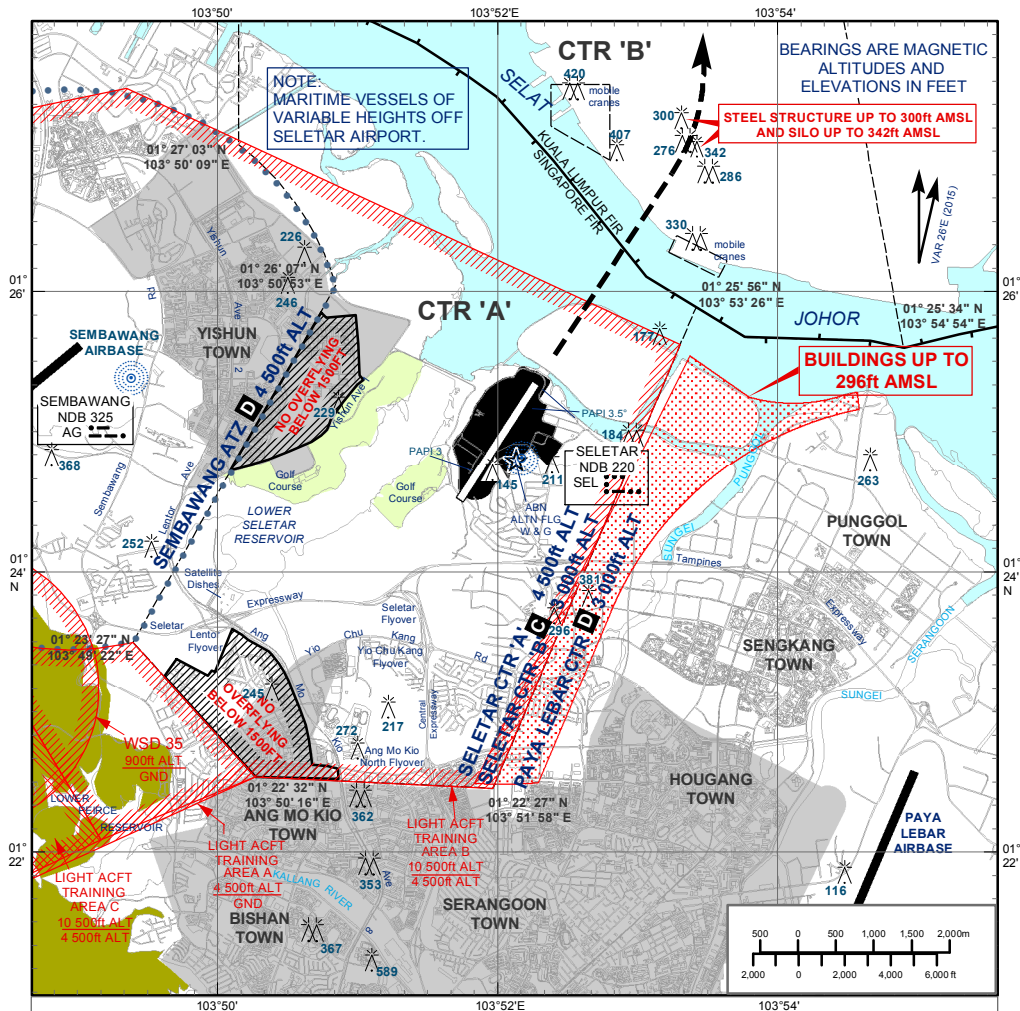
VISUAL
DEPARTURE
CHART

AD ELEV 46 ft

TWR 118.45
270.4

SINGAPORE/SELETAR


RWY 03



ADVISORY DEPARTURE PROCEDURE FOR RUNWAY 03

On departure, pilots of both fixed-wing and rotary-wing aircraft should climb ahead to an altitude cleared by ATC. Pilots can expect a radar heading to leave Seletar CTR. Where a radar heading is not given, pilots shall navigate to the next waypoint in accordance with their clearance.

CAUTION

- Pilots are required to keep clear of Sembawang ATZ and Paya Lebar CTR. Turns should therefore be kept within Seletar CTR.
- Pilots should not fly to the east of the runway. This is to keep clear of tall buildings up to 296ft AMSL there. Pilots should have all relevant obstructions in sight, including the steel structure 300ft AMSL and the Silo 342ft AMSL 2nm north of the airfield.
-  Built-up residential areas - No overflying below 1 500ft.
Aircraft types which are unable to safely manoeuvre clear of the restricted areas are not allowed to operate at Seletar Airport.