

**STANDARD DEPARTURE CHART
RNAV (GNSS) -
INSTRUMENT (SID)**

TWR 118.6 / 118.25
APP 120.3
ACC 134.4

TRANSITION ALTITUDE
11 000ft

D-ATIS AP ID-WSSS
128.6

**SINGAPORE/Singapore Changi
RWY 02C/20C
ANITO DEPARTURES
ANITO 6A (R02C)
ANITO 7B (R20C)**

ELEV, ALT IN FEET
BEARINGS, TRACKS AND
RADIALS ARE MAGNETIC
VAR 26°E (2015)

DISTANCES IN NM

NOTE: RADAR REQUIRED

NOTE: ACFT UNABLE TO FLY THE SID
PROFILE SHALL INFORM ATC
PRIOR TO DEPARTURE AND TO
EXPECT RADAR VECTORING,
IF NECESSARY

NOTE: RNAV-1 NAVIGATION SPECIFICATION
GNSS REQUIRED

NOTE: REFER TO BACK PAGE FOR
- FORMAL AND TABULAR DESCRIPTIONS
- RADIO COM FAILURE PROCEDURES

GENERAL INFORMATION

**INITIAL CLIMB
3000FT OR AS DIRECTED BY ATC**

ON INITIAL CONTACT WHEN REQUESTING ATC,
INFORM ATC OF THE FLIGHT LEVEL AIRCRAFT
CAN CROSS ANITO

ALL SIDs INCLUDE NOISE PREFERENTIAL ROUTES.

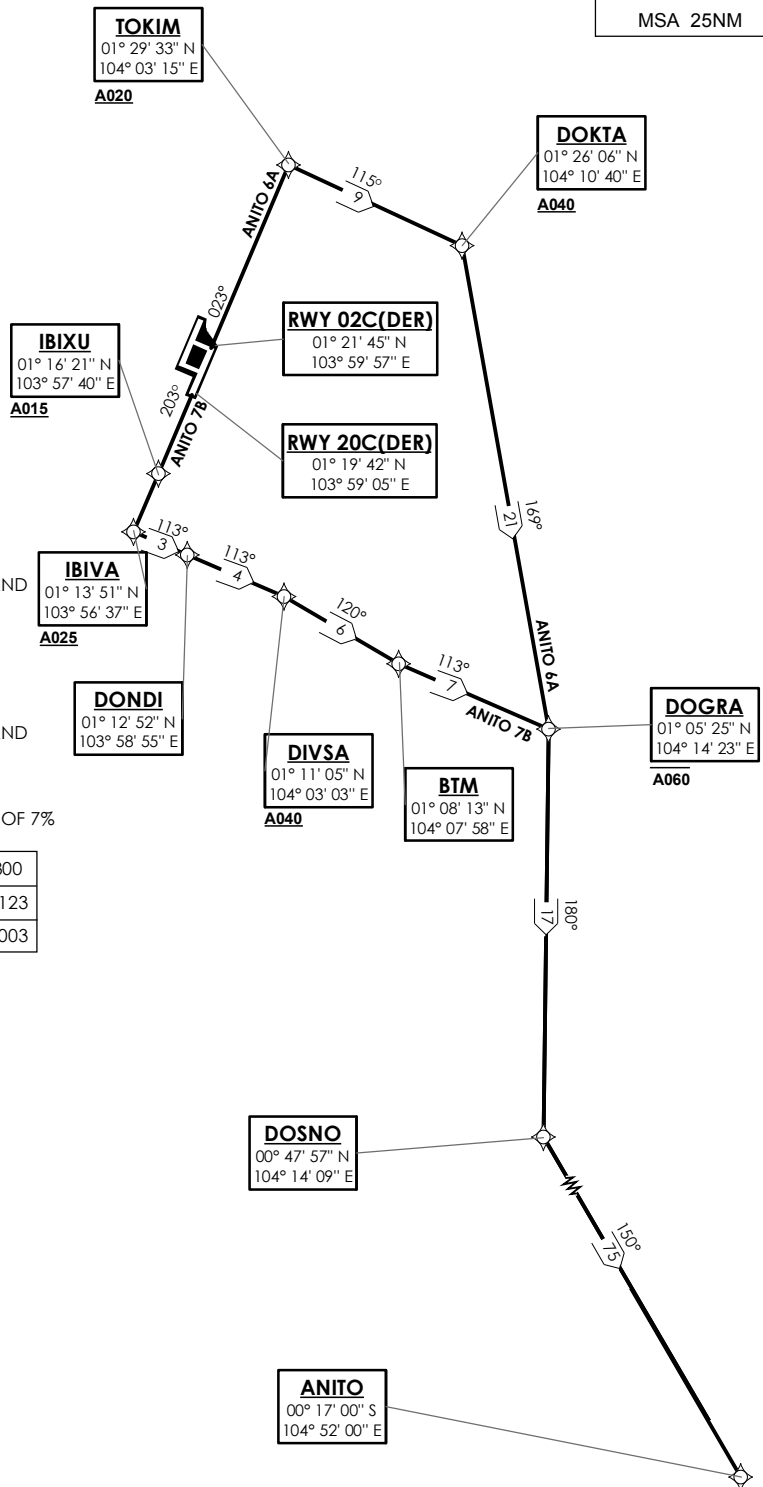
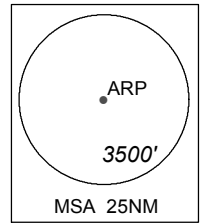
RWY 02C

SHALL NOT EXCEED IAS 230KTS UNTIL PASSING 4000FT AMSL AND
NOT EXCEED IAS 250KTS UNTIL PASSING 10000FT AMSL.
CRUISING LEVELS WILL BE ISSUED AFTER TAKE-OFF
BY SINGAPORE RADAR.
SEE (ENR 1.5-4) FOR MINIMUM CLIMB GRADIENT CRITERIA.

RWY 20C

SHALL NOT EXCEED IAS 230KTS UNTIL PASSING 4000FT AMSL AND
NOT EXCEED IAS 250KTS UNTIL PASSING 10000FT AMSL.
CRUISING LEVELS WILL BE ISSUED AFTER TAKE-OFF
BY SINGAPORE RADAR.
DEPARTURES SHALL BE ON A MINIMUM NET CLIMB GRADIENT OF 7%
UNTIL REACHING OR PASSING 2500FT, THEREAFTER 3.3%.

| | | | | | | |
|-------------------|-----|-----|------|------|------|------|
| GND SPEED - KNOTS | 75 | 100 | 150 | 200 | 250 | 300 |
| 7% V/V (fpm) | 532 | 709 | 1062 | 1416 | 1769 | 2123 |
| 3.3% V/V (fpm) | 251 | 334 | 501 | 668 | 835 | 1003 |



NOT TO SCALE

7 DEC 2017

ANITO 6A (SID) RNAV GNSS RWY 02C - DESCRIPTIONS**Formal & Abbreviated Descriptions**

| Formal Description | Abbreviated Description | Path Terminator | Fly-Over required |
|--|--------------------------|-----------------|-------------------|
| To TOKIM on course 023° at or above 2000ft, turn right. To DOKTA at or above 4000ft, turn right. To DOGRA at or below 6000ft, turn right. To DOSNO, turn left. To ANITO. | TOKIM [M023; A020+; R] - | CF | N |
| | DOKTA [A040+; R] - | TF | N |
| | DOGRA [A060-; R] - | TF | N |
| | DOSNO [L] - | TF | N |
| | ANITO | TF | N |

Tabular Descriptions

| Path Term | Waypoint Name | Fly-Over | Course °M(°T) | Magnetic Variation | Turn Direction | Altitude | Speed Limit | Navigation Spec |
|-----------|---------------|----------|---------------|--------------------|----------------|----------|-------------|-----------------|
| CF | TOKIM | - | 023(022.5) | -0.5 | R | A020+ | - | RNAV1 |
| TF | DOKTA | - | 115(114.5) | -0.5 | R | A040+ | - | RNAV1 |
| TF | DOGRA | - | 169(168.5) | -0.5 | R | A060- | - | RNAV1 |
| TF | DOSNO | - | 180(179.5) | -0.5 | L | - | - | RNAV1 |
| TF | ANITO | - | 150(149.5) | -0.5 | - | - | - | RNAV1 |

ANITO 7B (SID) RNAV GNSS RWY 20C - DESCRIPTIONS**Formal & Abbreviated Descriptions**

| Formal Description | Abbreviated Description | Path Terminator | Fly-Over required |
|---|-------------------------|-----------------|-------------------|
| To IBIXU on course 203° at or above 1500ft. To IBIVA at or above 2500ft, turn left. To DONDI. To DIVSA at or above 4000ft, turn right. To BTM, turn left. To DOGRA at or below 6000ft, turn right. To DOSNO, turn left. To ANITO. | IBIXU [M203; A015+] - | CF | N |
| | IBIVA [A025+; L] - | TF | N |
| | DONDI - | TF | N |
| | DIVSA [A040+; R] - | TF | N |
| | BTM [L] - | TF | N |
| | DOGRA [A060-; R] - | TF | N |
| | DOSNO [L] - | TF | N |
| ANITO | TF | N | |

Tabular Descriptions

| Path Term | Waypoint Name | Fly-Over | Course °M(°T) | Magnetic Variation | Turn Direction | Altitude | Speed Limit | Navigation Spec |
|-----------|---------------|----------|---------------|--------------------|----------------|----------|-------------|-----------------|
| CF | IBIXU | - | 203(202.5) | -0.5 | - | A015+ | - | RNAV1 |
| TF | IBIVA | - | 203(202.5) | -0.5 | L | A025+ | - | RNAV1 |
| TF | DONDI | - | 113(112.5) | -0.5 | - | - | - | RNAV1 |
| TF | DIVSA | - | 113(112.5) | -0.5 | R | A040+ | - | RNAV1 |
| TF | BTM | - | 120(119.5) | -0.5 | L | - | - | RNAV1 |
| TF | DOGRA | - | 113(112.5) | -0.5 | R | A060- | - | RNAV1 |
| TF | DOSNO | - | 180(179.5) | -0.5 | L | - | - | RNAV1 |
| TF | ANITO | - | 150(149.5) | -0.5 | - | - | - | RNAV1 |

RADIO COMMUNICATIONS FAILURE PROCEDURE

| | |
|---|--|
| 1 | SET TRANSPONDER TO MODE A/C CODE 7600 |
| 2 | COMMUNICATIONS FAILURE OCCURS IMMEDIATELY AFTER DEPARTURE ON: RWY 02C - PROCEED STRAIGHT AHEAD TO NYLON HOLDING AREA (NHA) CLIMBING TO THE LAST ASSIGNED ALTITUDE, THEREAFTER REFER TO SINGAPORE AIP ON RADIO COMMUNICATIONS FAILURE PROCEDURE. RWY 20C - PROCEED STRAIGHT AHEAD TO SAMKO HOLDING AREA (SHA) CLIMBING TO THE LAST ASSIGNED ALTITUDE, THEREAFTER REFER TO SINGAPORE AIP ON RADIO COMMUNICATIONS FAILURE PROCEDURE. |