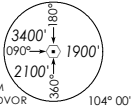


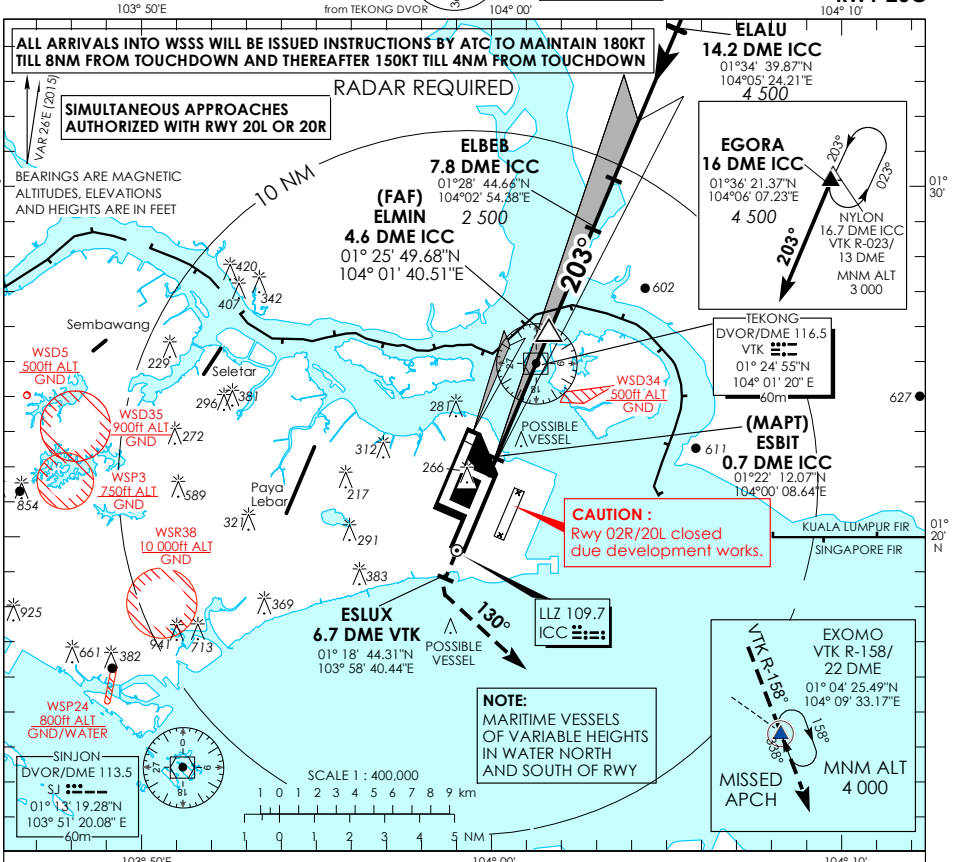
INSTRUMENT APPROACH CHART

AERODROME ELEV **22ft**
HEIGHT RELATED TO
THR RWY 20C - ELEV **15ft**

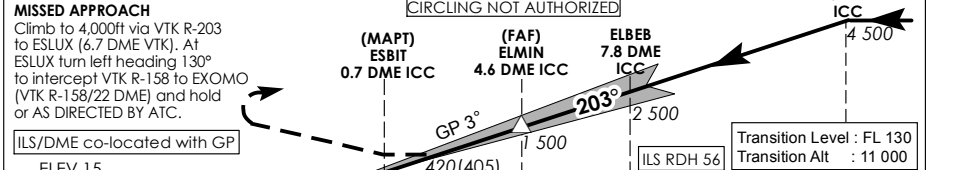


D-ATIS	AP ID	WSS
APP	128.6	
TWR	120.3	
	119.3	
	118.6	
	118.25	

SINGAPORE/ SINGAPORE CHANGI ICC ILS/DME RWY 20C



This procedure requires a missed approach climb gradient of 2.8% (171 ft/NM) until passing 2,000ft. For aircraft which can only achieve a 2.5% (152 ft/NM) climb gradient, the CAT I OCA (OCH) is 315ft (300ft).



*** TIMING NOT AUTHORIZED WHEN GP INOP**

NAUTICAL MILES FROM RWY THR 20C

Category of Aircraft	OCA (OCH)					
	A	B	C	D	D _L	
Straight-in	CAT I ILS	166 (151)	180 (165)	196 (181)	209 (194)	212 (197)
	CAT II ILS	71 (56)	78 (63)	91 (76)	101 (86)	107 (92)
	GP INOP	420 (405)				

Distance	4 DME		3 DME		2 DME	
Altitude (Height)	1290 (1275)		980 (965)		660 (645)	
Speed	knots	70	120	150	185	
FAF - MAPT 3.9nm	min : s *	3 : 21	1 : 57	1 : 34	1 : 16	
Rate of descent/GS	ft/min		370	635	795	980