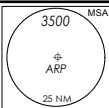


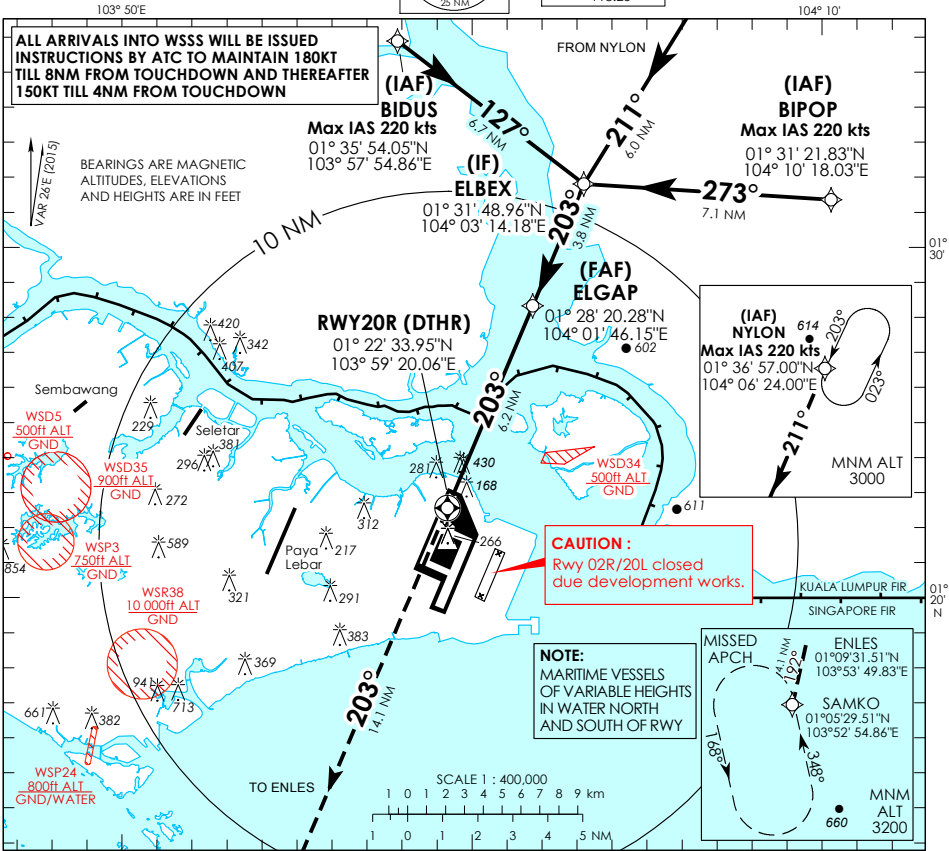
INSTRUMENT APPROACH CHART - ICAO

AERODROME ELEV **22ft**
HEIGHT RELATED TO
DTHR RWY 20R - ELEV **13ft**



D-ATIS	AP ID	WSSS
APP	128.6	120.3
TWR	119.3	118.6
	118.6	118.25

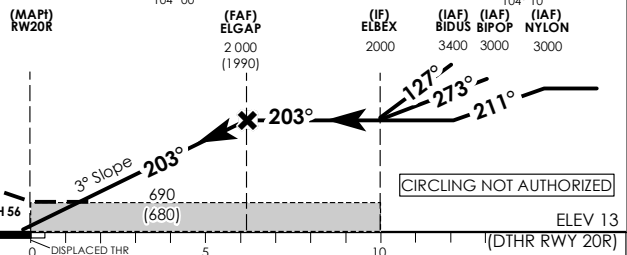
**SINGAPORE/ SINGAPORE CHANGI
RNAV (GNSS) RWY 20R**



Transition Level : FL 130
Transition Alt : 11 000

MISSED APPROACH: CLIMB DIRECT TO ENLES. TURN LEFT TO SAMKO TO JOIN THE HOLDING AT 3200FT OR ABOVE OR AS DIRECTED BY ATC.

MINIMUM TEMPERATURE FOR BARO-VNAV APPROACHES: 5°C



Category of Aircraft	OCA (OCH)							
	A	B	C	D				
LNAV/VNAV	2.5%	690 (680)						
LNAV	2.5%	690 (680)						
Fix	BIDUS	NYLON	BIPOPO	ELBEX	ELGAP	RWY20R	ENLES	SAMKO
Altitude (Height)	3400 (3387)	3000 (2987)	3000 (2987)	2000 (1987)	2000 (1987)	690 (680)	2180 (2167)	3200 (3187)
Speed	knots	80	100	120	140	160	180	
FAF - MAP1 6.2 nm	min : s	4 : 39	3 : 44	3 : 06	2 : 40	2 : 20	2 : 04	
Rate of descent/GS	ft/min	425	531	637	743	849	955	