

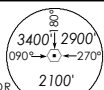
INSTRUMENT APPROACH CHART

AERODROME ELEV 65ft

HEIGHT RELATED TO

THR RWY 02 - ELEV 43ft

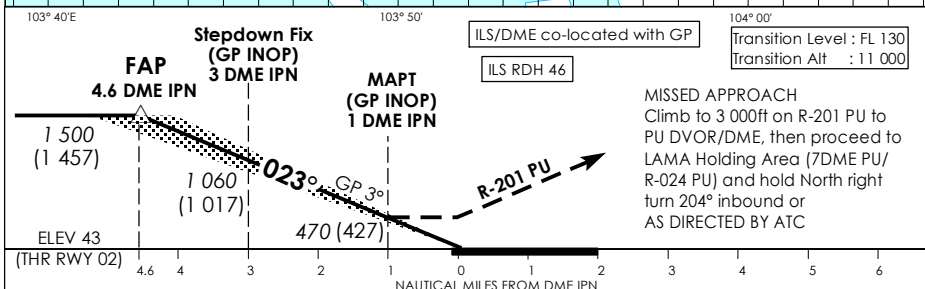
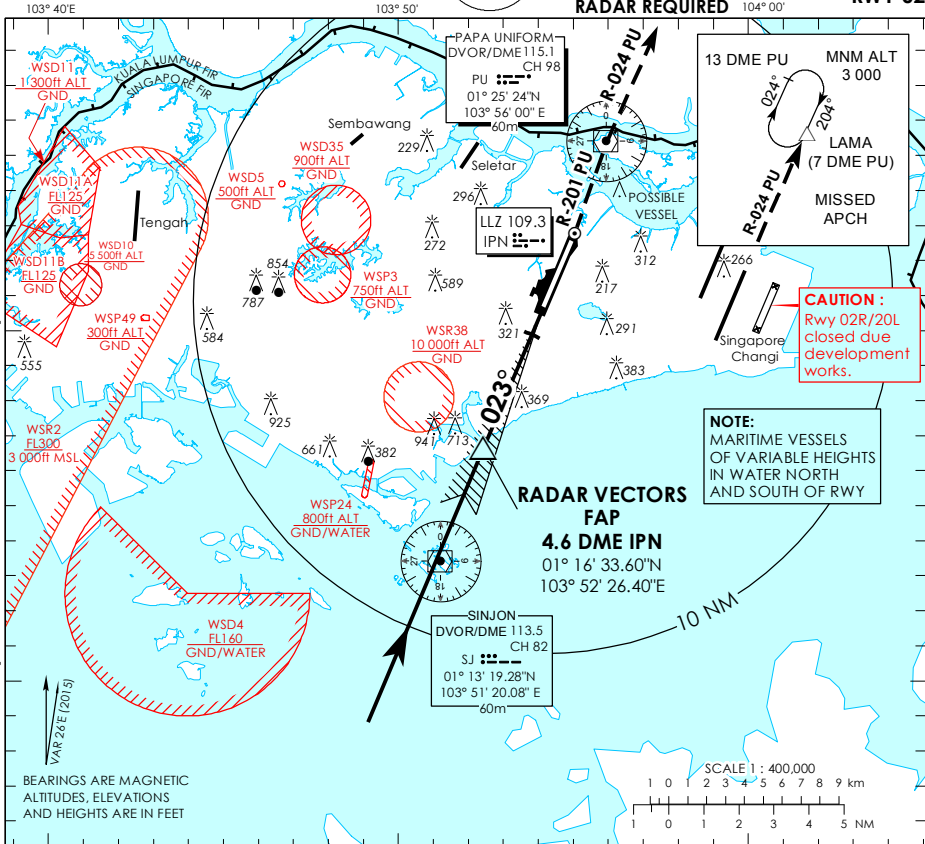
MSA 25 NM from PAPA UNIFORM DVOR



| | |
|-----------------|--------------|
| ATIS Paya Lebar | 148.9 |
| Singapore APP | 120.3 |
| Paya Lebar APP | 119.9 298.0 |
| Paya Lebar TWR | 118.05 263.1 |
| GND CON | 121.7 296.0 |

SINGAPORE/PAYA LEBAR

IPN ILS/DME RWY 02



| OCA (OCH) | | | | | |
|----------------------|-------------|-------------|-----------|-----------|-----------|
| Category of Aircraft | A | B | C | D | |
| Straight-in | CAT I ILS | 178 (135) | 188 (145) | 198 (155) | 208 (165) |
| | GP INOP | 470 (427) | | | |
| Distance | 4 DME | 3 DME | 2 DME | | |
| Altitude (Height) | 1300 (1257) | 1060 (1017) | 740 (697) | | |
| Speed | knots | 70 | 120 | 150 | 185 |
| FAF - MAPT 3.6nm | min : s | 3 : 06 | 1 : 48 | 1 : 27 | 1 : 11 |
| Rate of descent/GS | ft/min | 370 | 635 | 795 | 980 |