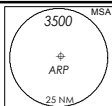


INSTRUMENT APPROACH CHART - ICAO

AERODROME ELEV **22ft**
HEIGHT RELATED TO
THR RWY 20C - ELEV **15ft**

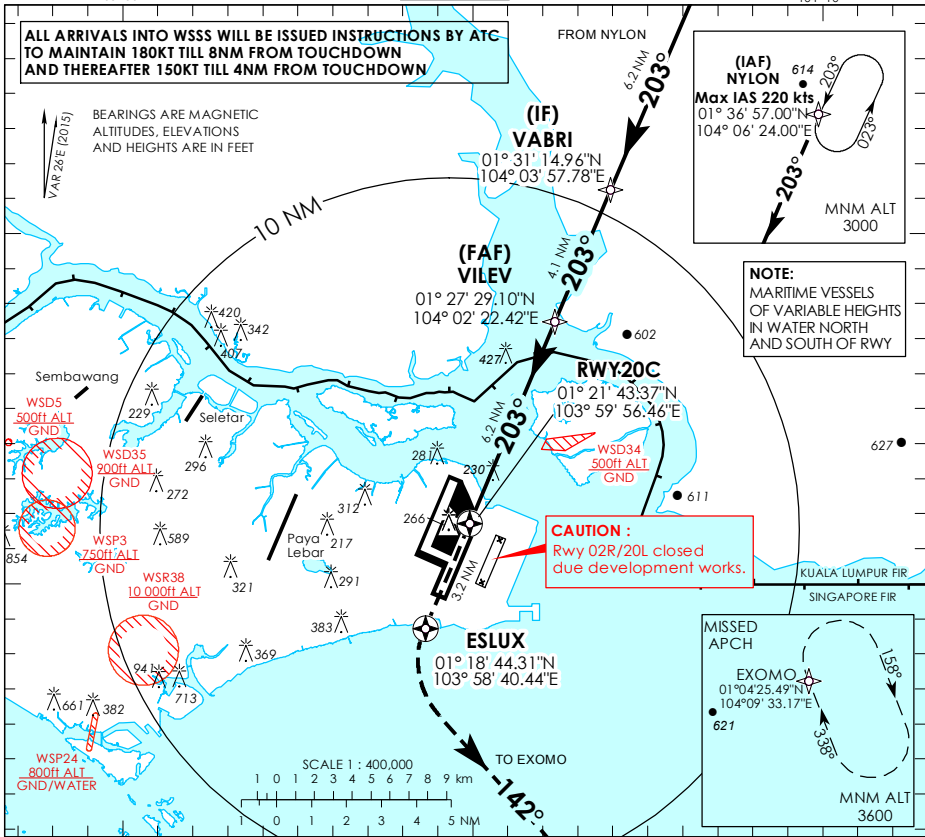


D-TIS	AP ID	WSSS
APP	128.6	
	120.3	
TWR	119.3	
	118.6	
	118.25	

SINGAPORE/ SINGAPORE CHANGI RNAV (GNSS) RWY 20C

ALL ARRIVALS INTO WSSS WILL BE ISSUED INSTRUCTIONS BY ATC TO MAINTAIN 180KT TILL 8NM FROM TOUCHDOWN AND THEREAFTER 150KT TILL 4NM FROM TOUCHDOWN

BEARINGS ARE MAGNETIC
ALTITUDES, ELEVATIONS
AND HEIGHTS ARE IN FEET
VAR 26 E (2015)



(IAF) NYLON
Max IAS 220 kts
01° 36' 57.00"N
104° 06' 24.00"E
MNM ALT 3000

NOTE:
MARITIME VESSELS
OF VARIABLE HEIGHTS
IN WATER NORTH
AND SOUTH OF RWY

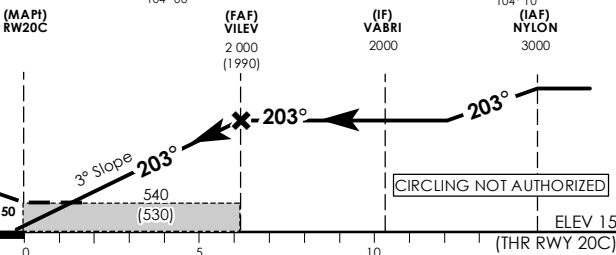
CAUTION :
Rwy 02R/20L closed
due development works.

MISSED APCH
EXOMO
01°04'25.49"N
104°09'33.17"E
MNM ALT 3600

Transition Level : FL 130
Transition Alt : 11 000

MISSED APPROACH:
CLIMB DIRECT TO ESLUX.
TURN LEFT TO MAGNETIC
COURSE 142° TO JOIN THE
HOLDING AT 3600FT OR ABOVE
OR AS DIRECTED BY ATC.

MINIMUM TEMPERATURE
FOR BARO-VNAV
APPROACHES: 5°C



		NAUTICAL MILES FROM DTHR RWY 20C					
		OCA (OCH)					
Category of Aircraft		A	B	C	D		
LNAV/VNAV	2.5%	490 (480)					
LNAV	2.5%	540 (530)					
Fix		NYLON	VABRI	VILEV	RW20C	ESLUX	EXOMO
Altitude (Height)		3000 (2985)	2000 (1985)	2000 (1985)	540 (525)	540 (525)	3600 (3585)
Speed	knots	80	100	120	140	160	180
FAF - MAP	6.2 nm	min : s	4 : 39	3 : 44	3 : 06	2 : 40	2 : 20
Rate of descent	/GS	ft/min	425	531	637	743	849
							955