

**STANDARD ARRIVAL CHART
RNAV (GNSS) -
INSTRUMENT (STAR)**

ACC 133.8
APP 124.05 / 120.3
ARR 119.3
TWR 118.6 / 118.25

TRANSITION ALTITUDE
11 000ft

D-ATIS AP ID-WSSS
128.6

**SINGAPORE/Singapore Changi
RWY 20R/C
BELVA ONE BRAVO ARRIVAL
BELVA 1B**

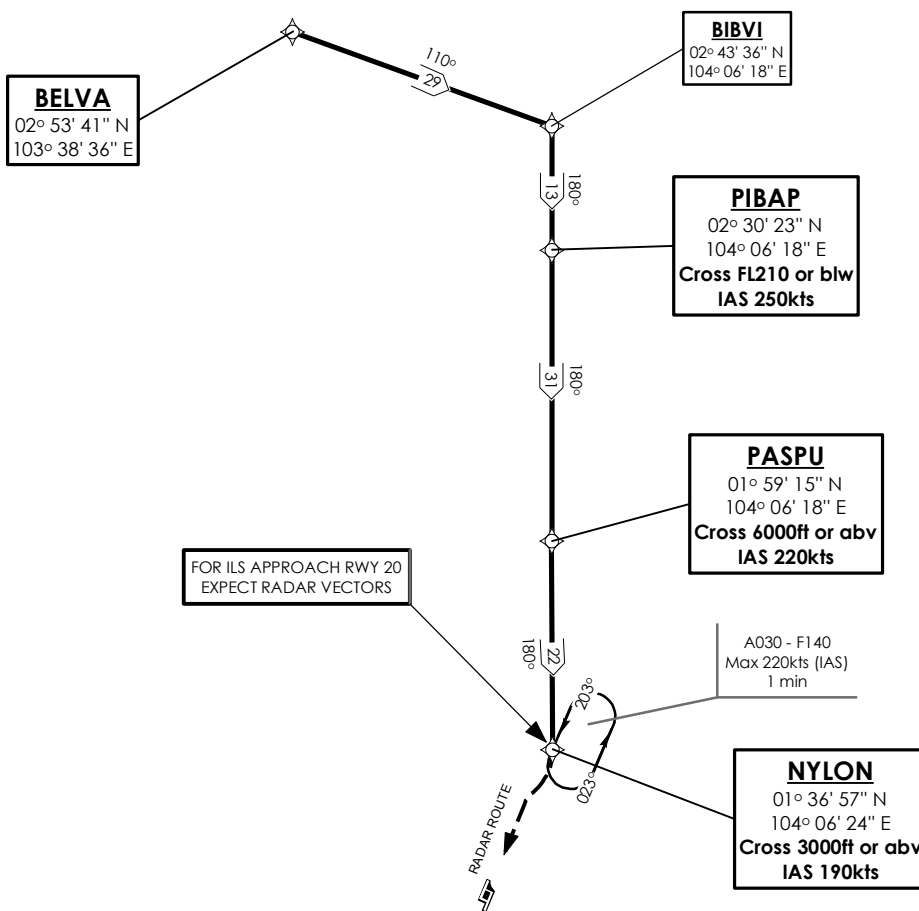
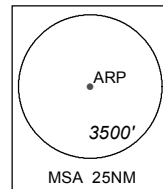
ELEV, ALT IN FEET
BEARINGS, TRACKS AND
RADIALS ARE MAGNETIC
VAR 26°E (2015)

DISTANCES IN NM

NOTE: RADAR REQUIRED

NOTE: RNAV-1 NAVIGATION SPECIFICATION GNSS REQUIRED

NOTE: REFER TO BACK PAGE FOR
- FORMAL AND TABULAR DESCRIPTIONS
- RADIO COM FAILURE PROCEDURES



NOT TO SCALE

BELVA 1B (STAR) RNAV GNSS RWY 20R/20C - DESCRIPTIONS

Formal & Abbreviated Descriptions

| Formal Description | Abbreviated Description | Path Terminator | Fly-Over required |
|--|-------------------------|-----------------|-------------------|
| From BELVA. To BIBVI, turn right. To PIBAP at or below FL210, speed 250kts, turn right. To PASPU, at or above 6000ft, speed 220kts. To NYLON at or above 3000ft, speed 190kts. | BELVA - | IF | N |
| | BIBVI [R] - | TF | N |
| | PIBAP [FL210-; K250] - | TF | N |
| | PASPU [A060+; K220] - | TF | N |
| | NYLON [A030+; K190] | TF | N |

Tabular Descriptions

| Path Term | Waypoint Name | Fly-Over | Course °M(°T) | Magnetic Variation | Turn Direction | Altitude | Speed Limit | Navigation Spec |
|-----------|---------------|----------|---------------|--------------------|----------------|----------|-------------|-----------------|
| IF | BELVA | - | - | -0.5 | - | - | - | RNAV1 |
| TF | BIBVI | - | 110(110.5) | -0.5 | R | - | - | RNAV1 |
| TF | PIBAP | - | 120(120.5) | -0.5 | - | FL210- | K250 | RNAV1 |
| TF | PASPU | - | 180(180.0) | -0.5 | - | A060+ | K220 | RNAV1 |
| TF | NYLON | - | 180(180.5) | -0.5 | - | A030+ | K190 | RNAV1 |

RADIO COMMUNICATIONS FAILURE PROCEDURE

| | |
|----------|--|
| 1 | SET TRANSPONDER TO MODE A/C CODE 7600 |
| 2 | <p>When cleared via BELVA 1B by Singapore ATC</p> <p>(a) Maintain last assigned flight level or altitude and proceed on BELVA 1B to NYLON</p> <p>(b) From NYLON commence descent and carry out appropriate landing procedure for RWY 20 as close as possible to EAT or ETA</p> <p>(c) If unable to effect a landing, refer to Singapore AIP for missed approach procedure</p> |
| 3 | <p>No clearance or instruction received from Singapore ATC</p> <p>- Refer to Singapore AIP for radio communications failure procedure</p> |