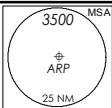


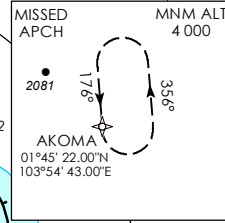
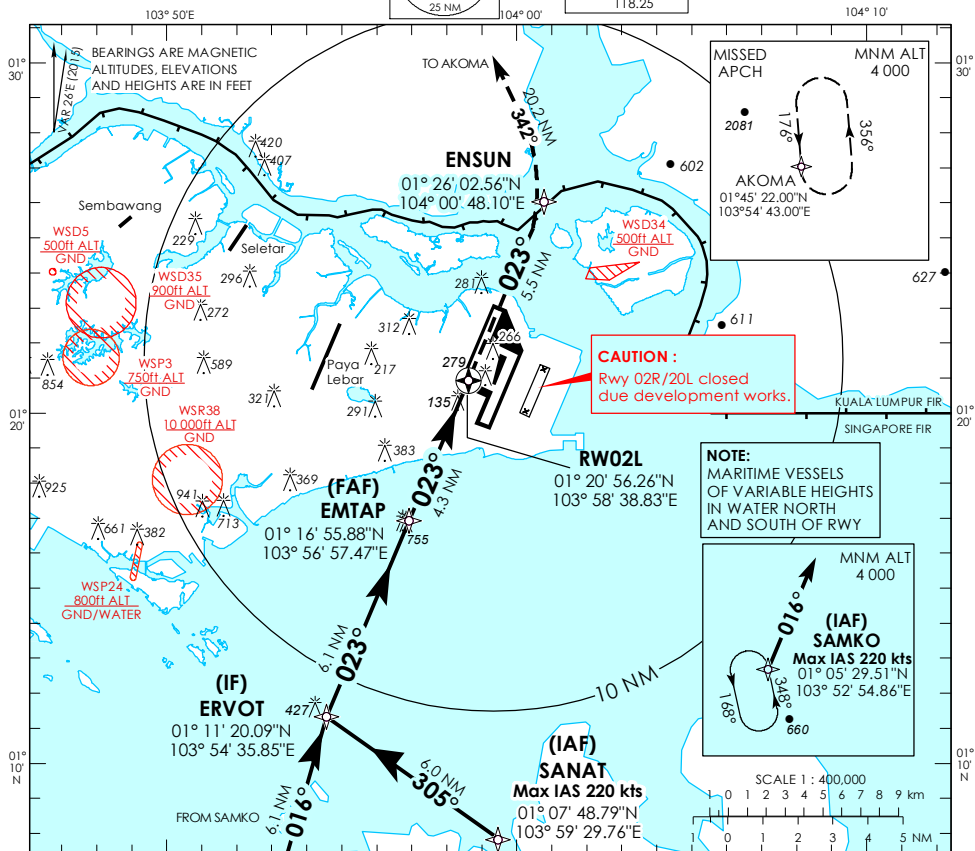
INSTRUMENT APPROACH CHART

AERODROME ELEV 22ft
HEIGHT RELATED TO
THR RWY 02L - ELEV 22ft

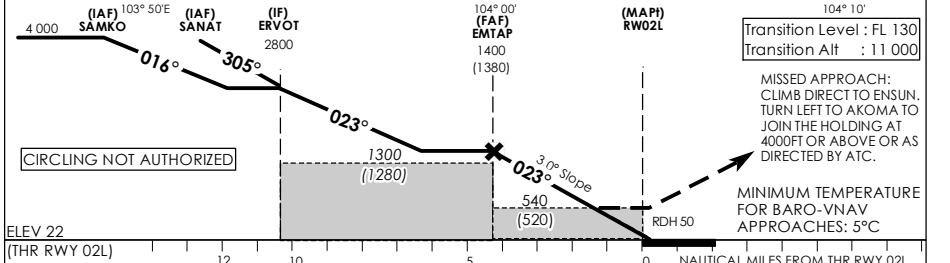
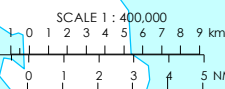
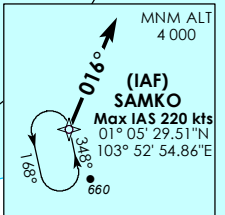


D-ATIS AP ID	WSSW
APP	120.3
TWR	119.3
	118.6
	118.25

**SINGAPORE/ SINGAPORE CHANGI
RNAV (GNSS) RWY 02L**



NOTE:
MARITIME VESSELS
OF VARIABLE HEIGHTS
IN WATER NORTH
AND SOUTH OF RWY



Transition Level : FL 130
Transition Alt : 11 000

MISSED APPROACH:
CLIMB DIRECT TO ENSUN,
TURN LEFT TO AKOMA TO
JOIN THE HOLDING AT
4000FT OR ABOVE OR AS
DIRECTED BY ATC.

MINIMUM TEMPERATURE
FOR BARO-VNAV
APPROACHES: 5°C

ELEV 22 (THR RWY 02L)		NAUTICAL MILES FROM THR RWY 02L						
		12	10	5	0			
Category of Aircraft		OCA (OCH)						
		A		B		C		D
LNAV/VNAV	2.5%	450 (430)						
LNAV	2.5%	540 (520)						
Fix	SAMKO	SANAT	ERVOT	EMTAP	RW02L	ENSUN	AKOMA	
Altitude (Height)	4000 (3978)	4000 (3978)	2800 (2778)	1400 (1378)	540 (518)	880 (858)	4000 (3978)	
Speed	knots	80	100	120	140	160	180	
FAF - MAP1 4.3nm	min : s	3 : 14	2 : 35	2 : 09	1 : 51	1 : 37	1 : 26	
Rate of descent/GS	ft/min	424	530	637	743	849	955	