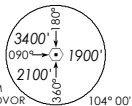


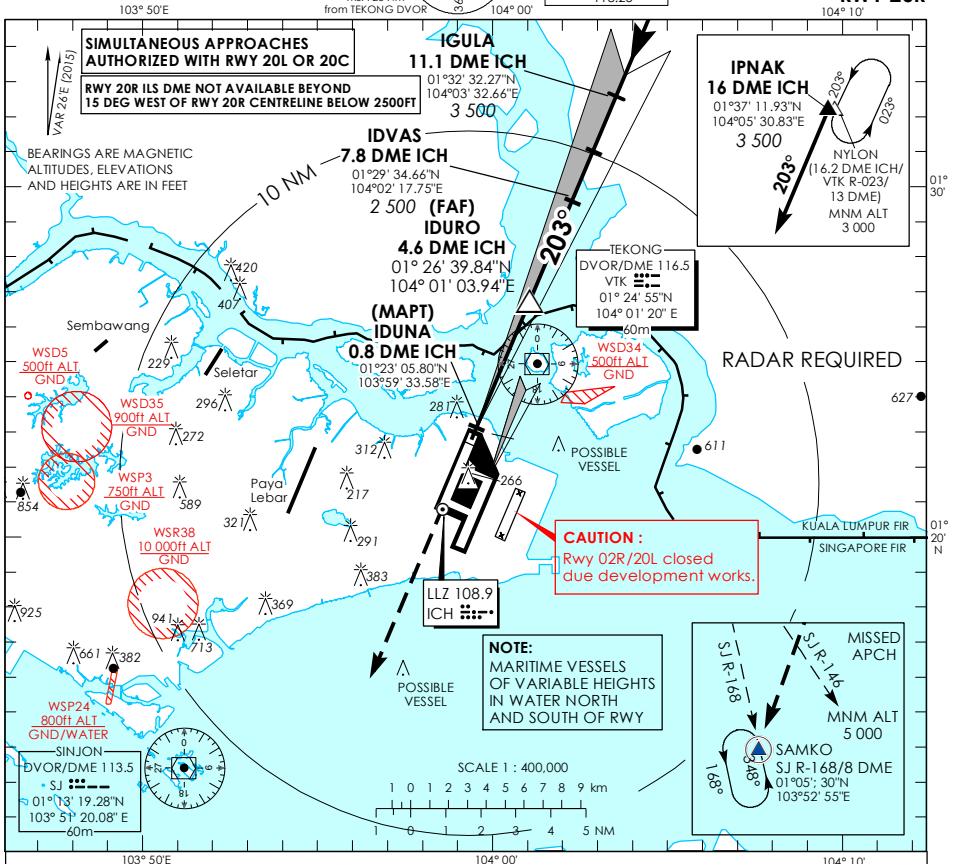
INSTRUMENT APPROACH CHART

AERODROME ELEV **22ft**
HEIGHT RELATED TO
DTHR RWY 20R - ELEV **13ft**

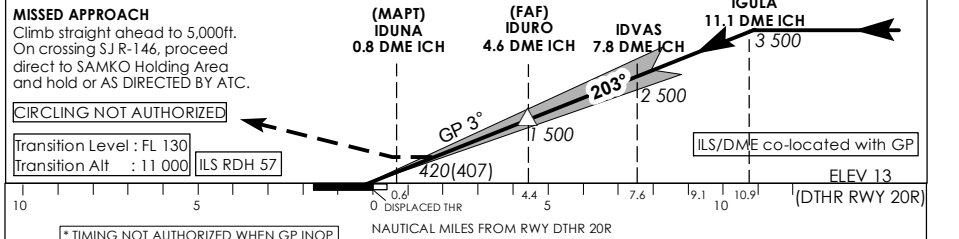


D-ATIS AP ID WSSS	128.6
APP	120.3
TWR	119.3
	118.6
	118.25

SINGAPORE/ SINGAPORE CHANGI ICH RLY 20R



This procedure requires a missed approach climb gradient of 3.7% (225 ft/NM) until passing 2,500ft. For aircraft which can only achieve a 2.5% (152 ft/NM) climb gradient, the CAT I OCA (OCH) is 693ft (680ft).



Category of Aircraft	OCA (OCH)				
	A	B	C	D	D _L
Straight-in	152 (139)	159 (146)	179 (166)	192 (179)	195 (182)
	420 (407)				
Distance	4 DME		3 DME		2 DME
Altitude (Height)	1290 (1277)		970 (957)		650 (637)
Speed	70 knots		120 knots		150 knots
Rate of descent/GS	370 ft/min		635 ft/min		795 ft/min
FAF - MAPT 3.9nm	min : s *		1 : 57		1 : 34
	3 : 21		1 : 57		1 : 16