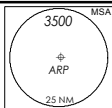


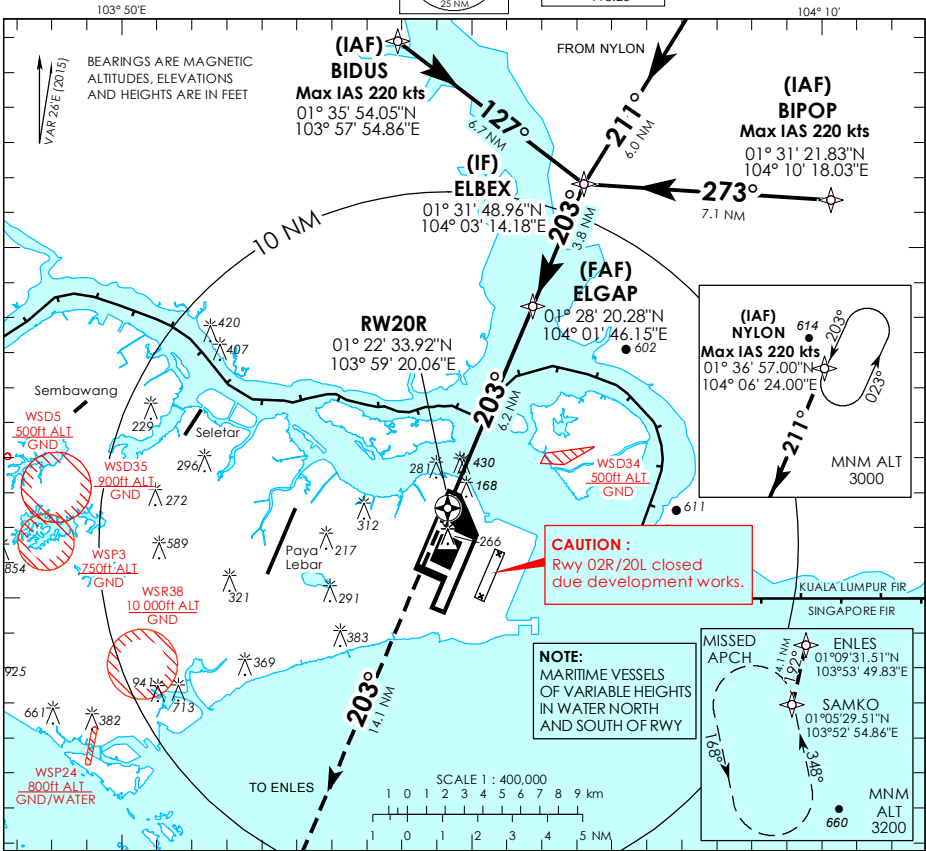
**INSTRUMENT
APPROACH
CHART - ICAO**

AERODROME ELEV **22ft**
HEIGHT RELATED TO
DTHR RWY 20R - ELEV **13ft**



D-TAS	AP ID	WSSS
APP	128.6	
	120.3	
TWR	119.3	
	118.6	
	118.25	

**SINGAPORE/
SINGAPORE CHANGI
RNAV (GNSS) RWY 20R**

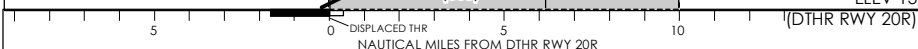


Transition Level : FL 130
Transition Alt : 11 000

MISSED APPROACH:
CLIMB DIRECT TO ENLES.
TURN LEFT TO SAMKO TO
JOIN THE HOLDING AT
3200FT OR ABOVE OR AS
DIRECTED BY ATC.

MINIMUM TEMPERATURE
FOR BARO-VNAV
APPROACHES: 5°C

(MAP) RWY20R	(FAF) ELGAP	(IF) ELBEX	(IAF) BIDUS	(IAF) BIPOP	(IAF) NYLON
	2 000 (1990)	2000	3400	3000	3000



		NAUTICAL MILES FROM DTHR RWY 20R							
		OCA (OCH)							
Category of Aircraft		A		B		C		D	
LNAV/VNAV	2.5%	690 (680)							
LNAV	2.5%	690 (680)							
Fix		BIDUS	NYLON	BIPOP	ELBEX	ELGAP	RWY20R	ENLES	SAMKO
Altitude (Height)		3400 (3387)	3000 (2987)	3000 (2987)	2000 (1987)	2000 (1987)	690 (680)	2180 (2167)	3200 (3187)
Speed	knots	80	100	100	120	140	140	160	180
FAF - MAP	6.2 nm	min : s	4 : 39	3 : 44	3 : 06	2 : 40	2 : 20	2 : 04	
Rate of descent/GS		ft/min	425	531	637	743	849	955	