

**INSTRUMENT APPROACH CHART**

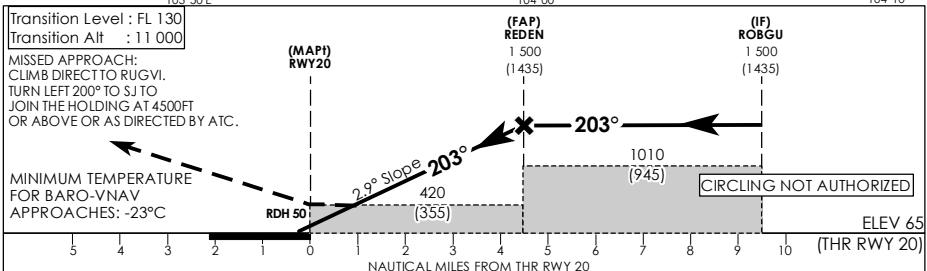
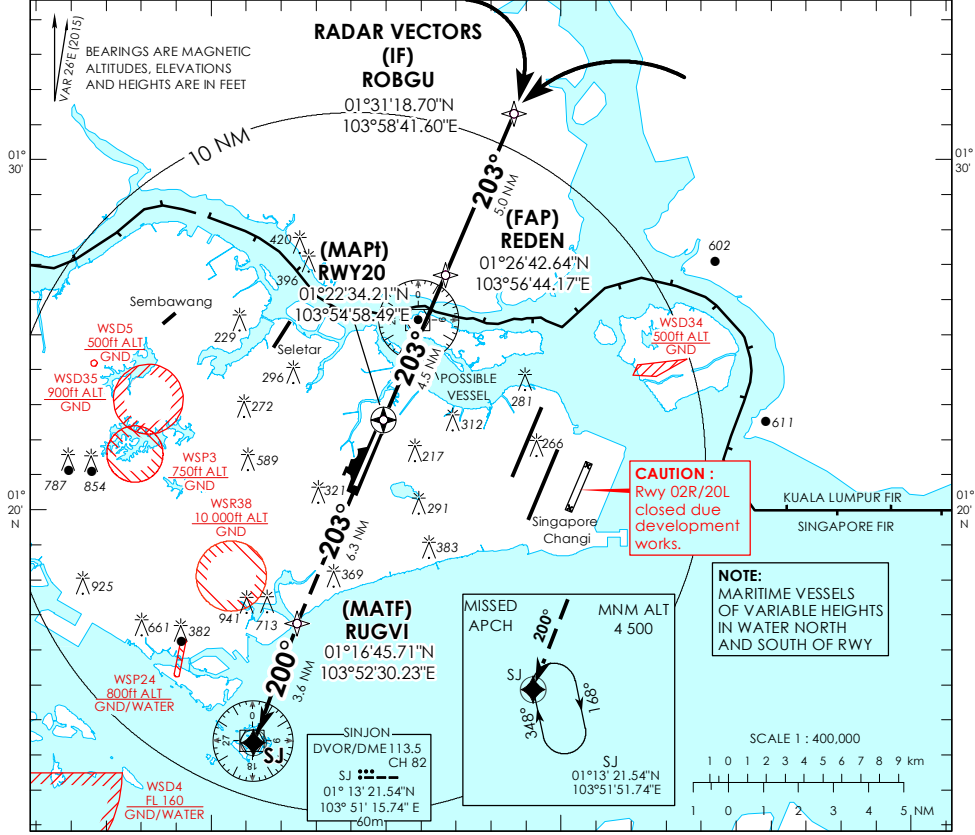
AERODROME ELEV 65ft  
HEIGHT RELATED TO THR RWY 20 - 65ft

MSA 25 NM from PAYA LEBAR ARP

**RADAR REQUIRED**

ATIS Paya Lebar	148.9
Singapore APP	120.3
Paya Lebar APP	119.9 298.0
Paya Lebar TWR	118.05 263.1
GND CON	121.7 296.0

**SINGAPORE/ PAYA LEBAR RNAV (GNSS) RWY 20**



Category of Aircraft	OCA (OCH)						
	A	B	C	D			
LNAV/VNAV	2.5%	420 (355)					
LNAV	2.5%	420 (355)					
Fix	ROBGU	REDEN	RWY20	RUGVI	SINJON		
Altitude (Height)	1500 (1435)	1500 (1435)	420 (355)	1030 (965)	1580 (1515)		
Speed	knots	80	100	120	140	160	180
FAP - MAP1 4.5 nm	min : s	3 : 23	2 : 42	2 : 15	1 : 56	1 : 41	1 : 30
Rate of descent/GS	ft/min	410	513	615	718	821	923