

INSTRUMENT APPROACH CHART

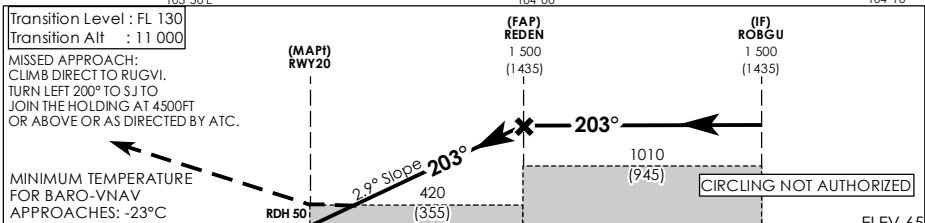
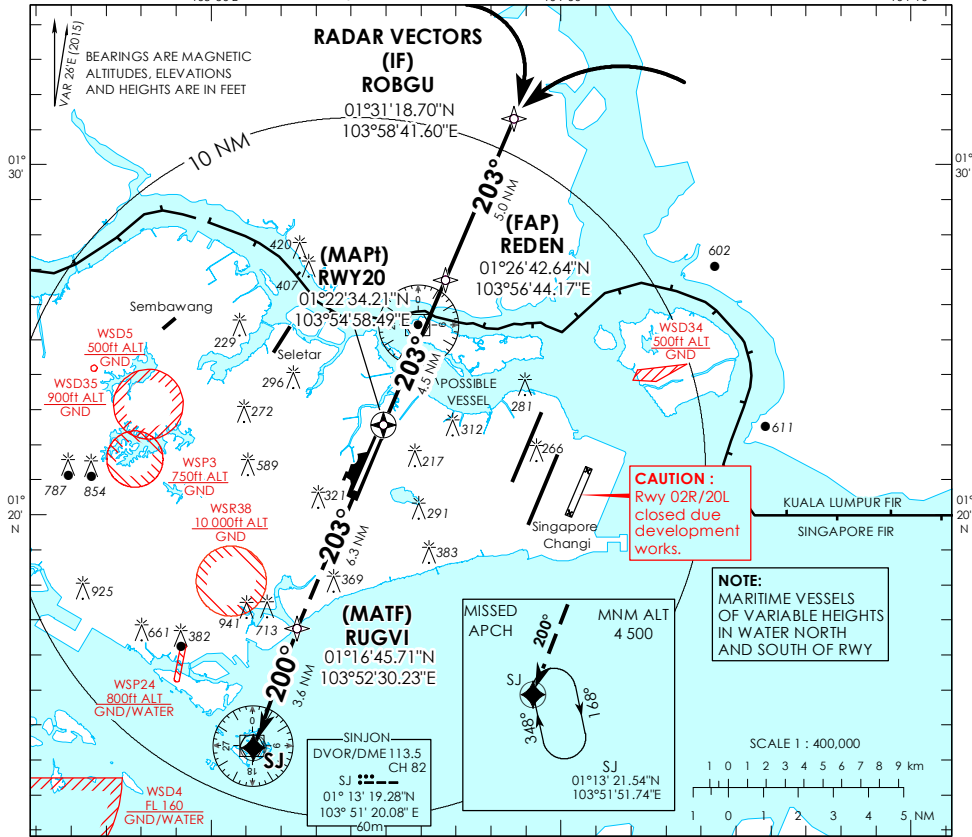
AERODROME ELEV 65ft
HEIGHT RELATED TO THR RWY 20 - 65ft

MSA 25 NM from PAYA LEBAR ARP

ATIS Paya Lebar	148.9
Singapore APP	120.3
Paya Lebar APP	119.9 298.0
Paya Lebar TWR	118.05 263.1
GND CON	121.7 296.0

SINGAPORE/ PAYA LEBAR RNAV (GNSS) RWY 20

RADAR REQUIRED



		NAUTICAL MILES FROM THR RWY 20					
		OCA (OCH)					
Category of Aircraft		A	B	C	D		
LNAV/VNAV	2.5%			420 (355)			
LNAV	2.5%			420 (355)			
Fix		ROBGU	REDEN	RWY20	RUGVI	SINJON	
Altitude (Height)	1500 (1435)	1500 (1435)	420 (355)	1030 (965)	1580 (1515)		
Speed	knots	80	100	120	140	160	180
FAP - MAP1 4.5 nm	min : s	3 : 23	2 : 42	2 : 15	1 : 56	1 : 41	1 : 30
Rate of descent/GS	ft/min	410	513	615	718	821	923