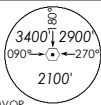


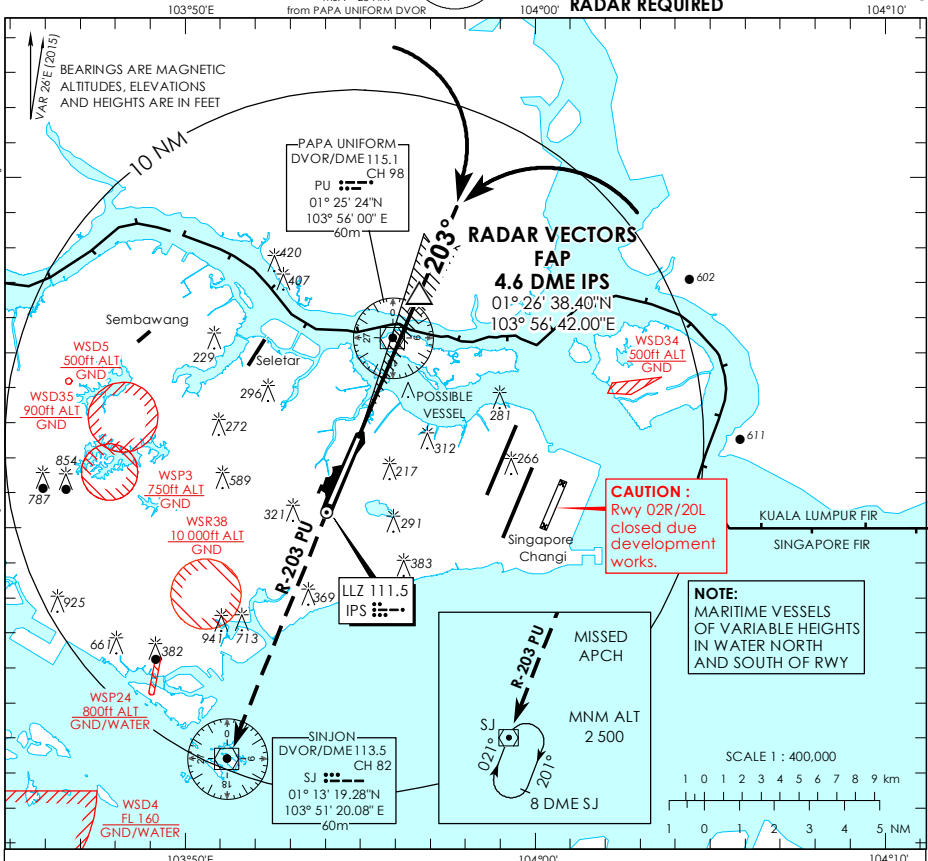
**INSTRUMENT
APPROACH
CHART**

AERODROME ELEV 65ft
HEIGHT RELATED TO
THR RWY 20 - 65ft



ATIS Paya Lebar	148.9
Singapore APP	120.3
Paya Lebar APP	119.9 298.0
Paya Lebar TWR	118.05 263.1
GND CON	121.7 296.0

**SINGAPORE/
PAYA LEBAR
IPS ILS/DME
RWY 20**

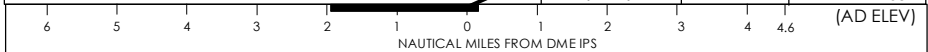
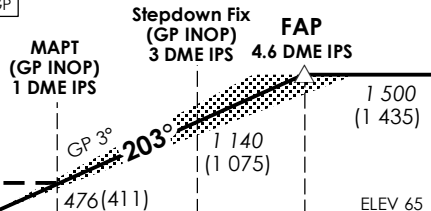


Transition Level : FL 130
Transition Alt : 11 000

ILS/DME co-located with GP

ILS RDH 55

MISSED APPROACH
Climb to 3 000ft on R-203 PU to SJ
DVOR/DME and hold South right
turn 021° inbound or
AS DIRECTED BY ATC



OCA (OCH)				
Category of Aircraft	A	B	C	D
Straight-in	CAT I ILS	194 (129)	204 (139)	214 (149)
	GP INOP	476 (411)		
Distance	4 DME	3 DME	2 DME	
Altitude (Height)	1300 (1235)	1140 (1075)	820 (755)	
Speed	knots	70	120	150
FAF - MAPT 3.6nm	min : s	3 : 06	1 : 48	1 : 27
Rate of descent/GS	ft/min	370	635	795