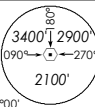


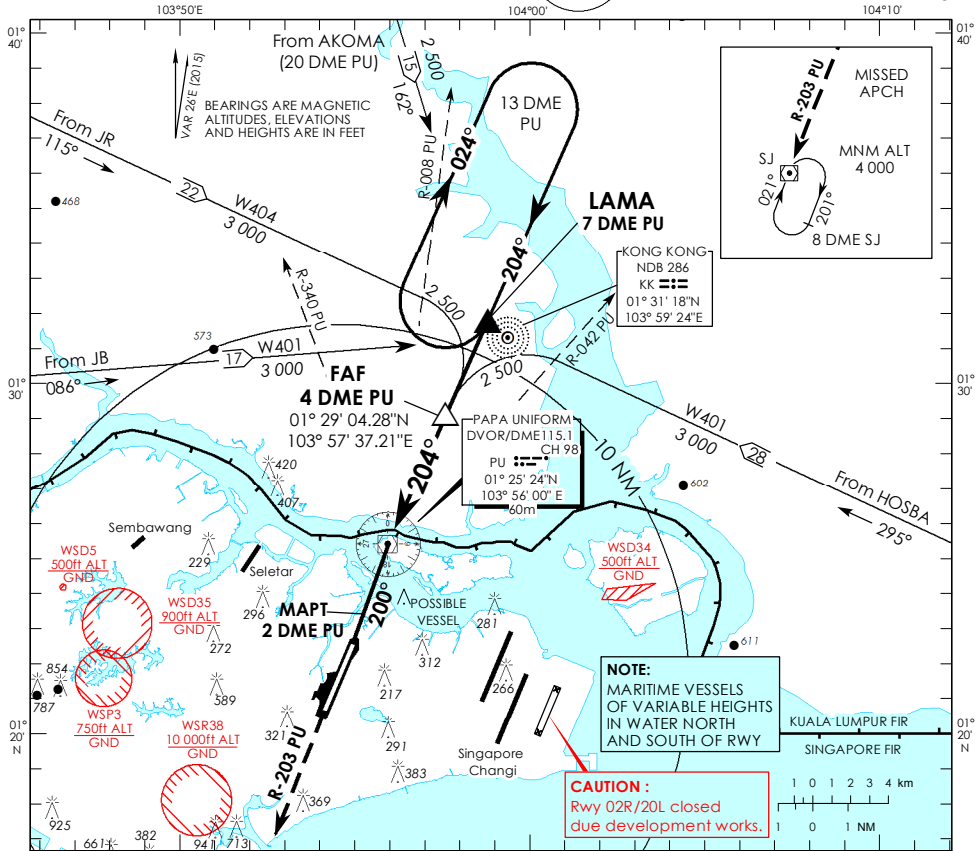
**INSTRUMENT
APPROACH
CHART**

AERODROME ELEV 65ft
HEIGHT RELATED TO
AD ELEV - 65ft



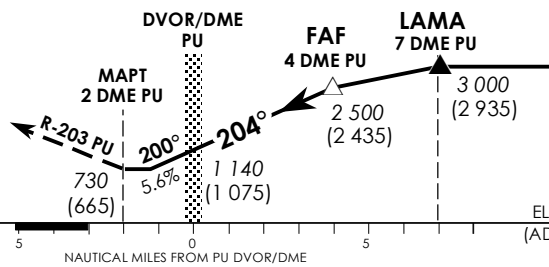
APP 120.3
119.9
TWR 118.05

**SINGAPORE/
PAYA LEBAR
PU DVOR/DME
RWY 20**



Transition Level : FL 130
Transition Alt : 11 000

MISSED APPROACH
Climb to 4 000ft on R-203 PU to SJ DVOR/DME and hold South right turn 021° inbound or AS DIRECTED BY ATC



OCA (OCH)						
Category of Aircraft	A		B		C	D
Straight-in	730 (665)					
Distance	3 DME	2 DME	1 DME	PU DVOR/DME	1 DME	
Altitude (Height)	2160 (2095)	1820 (1755)	1480 (1415)	1140 (1075)	800 (735)	
Speed	knots	70	120	150	185	
FAF - MAPT 6nm	min : s	5 : 09	3 : 00	2 : 24	1 : 57	
Rate of descent/GS	ft/min	370	635	795	980	