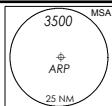


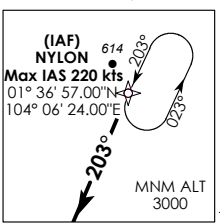
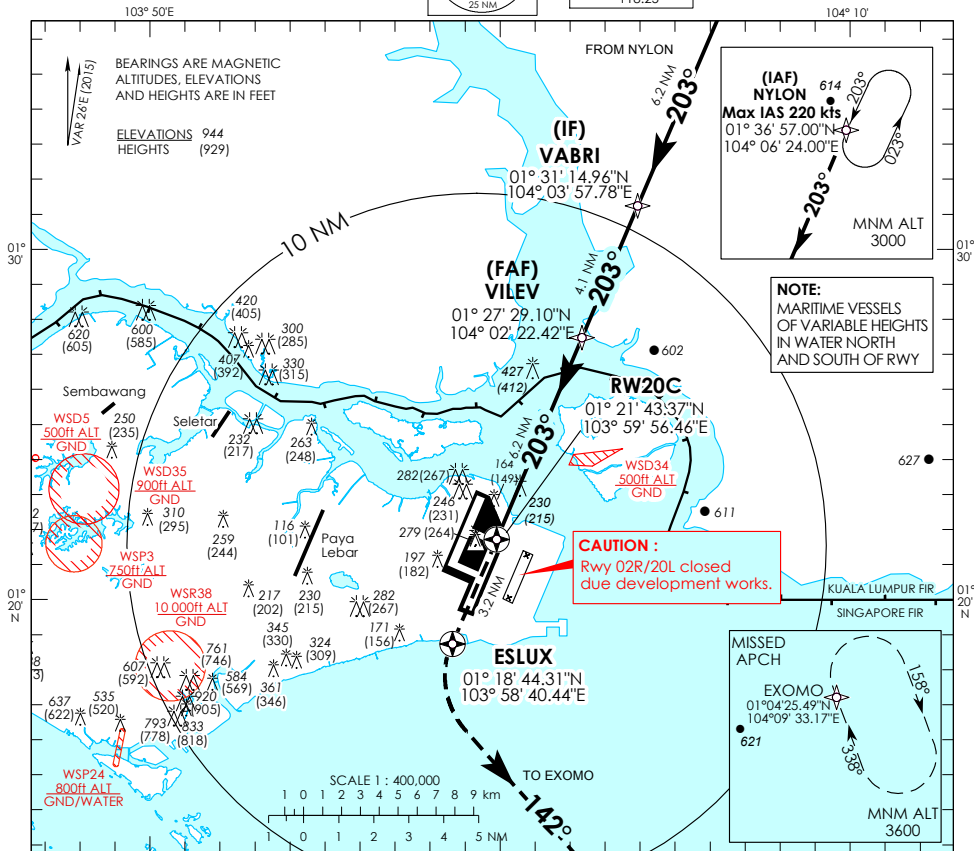
INSTRUMENT APPROACH CHART - ICAO

AERODROME ELEV **22ft**
HEIGHT RELATED TO
THR RWY 20C - ELEV **15ft**



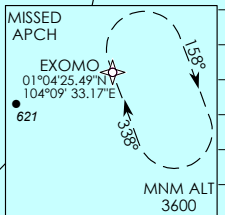
D-ATIS	AP ID	WSSS
APP	128.6	
TWR	120.3	
	119.3	
	118.6	
	118.25	

**SINGAPORE/ SINGAPORE CHANGI
RNAV (GNSS) RWY 20C**



NOTE:
MARITIME VESSELS
OF VARIABLE HEIGHTS
IN WATER NORTH
AND SOUTH OF RWY

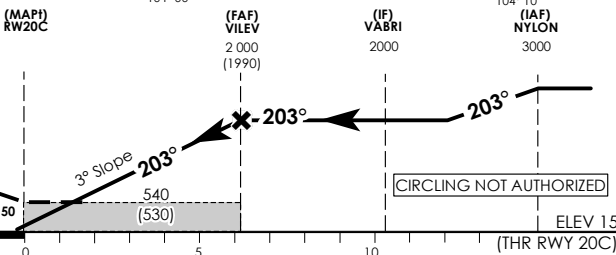
CAUTION :
Rwy 02R/20L closed
due development works.



Transition Level : FL 130
Transition Alt : 11 000

MISSED APPROACH:
CLIMB DIRECT TO ESLUX.
TURN LEFT TO MAGNETIC
COURSE 142° TO JOIN THE
HOLDING AT 3600FT OR ABOVE
OR AS DIRECTED BY ATIS

MINIMUM TEMPERATURE
FOR BARO-VNAV
APPROACHES: 5°C



Category of Aircraft	OCA (OCH)						
	A	B	C	D			
LNAV/VNAV	2.5%	490 (480)					
LNAV	2.5%	540 (530)					
Fix	NYLON	VABRI	VILEV	RW20C	ESLUX	EXOMO	
Altitude (Height)	3000 (2985)	2000 (1985)	2000 (1985)	540 (525)	540 (525)	3600 (3585)	
Speed	knots	80	100	120	140	160	180
FAF - MAP1 6.2 nm	min : s	4 : 39	3 : 44	3 : 06	2 : 40	2 : 20	2 : 04
Rate of descent/GS	ft/min	425	531	637	743	849	955