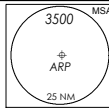


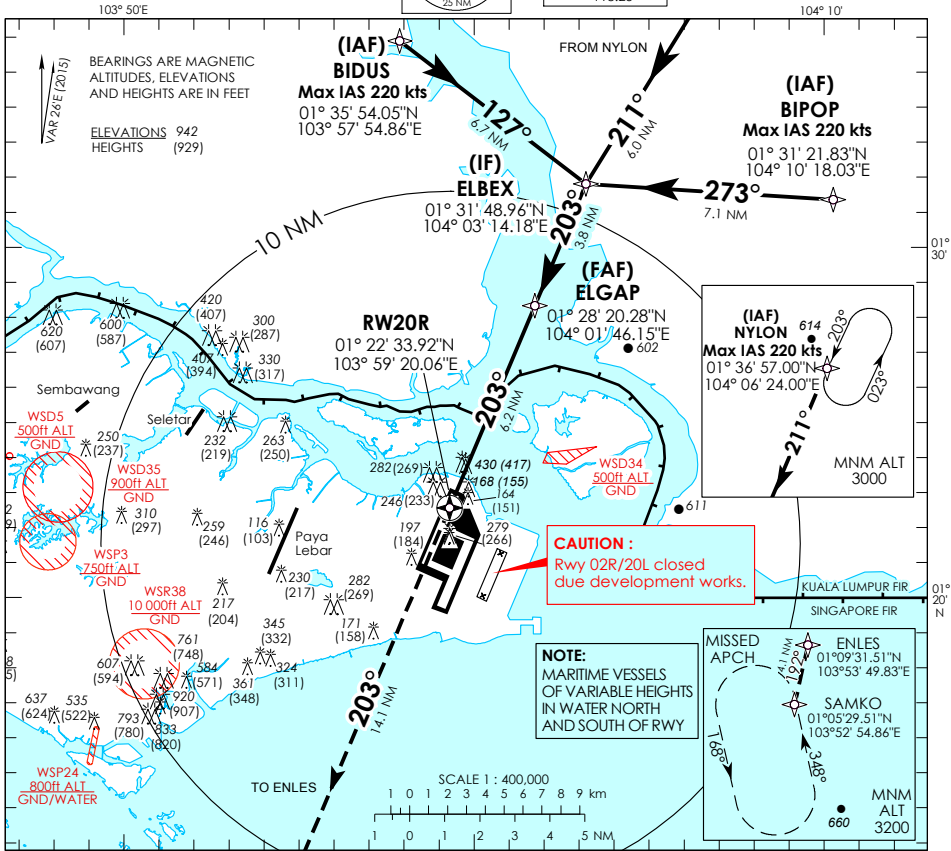
**INSTRUMENT
APPROACH
CHART - ICAO**

AERODROME ELEV 22ft
HEIGHT RELATED TO
DTHR RWY 20R - ELEV 13ft



| | | |
|--------|--------|------|
| D-ATIS | AP ID | WSSS |
| APP | 128.6 | |
| TWR | 120.3 | |
| | 119.3 | |
| | 118.6 | |
| | 118.25 | |

**SINGAPORE/
SINGAPORE CHANGI
RNAV (GNSS) RWY 20R**

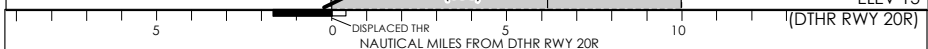


Transition Level : FL 130
Transition Alt : 11 000

MISSED APPROACH:
CLIMB DIRECT TO ENLES.
TURN LEFT TO SAMKO TO
JOIN THE HOLDING AT
3200FT OR ABOVE OR AS
DIRECTED BY ATC.

MINIMUM TEMPERATURE
FOR BARO-VNAV
APPROACHES: 5°C

| | | | | | |
|--------------|--------------|------------|-------------|-------------|-------------|
| (MAP) RW20R | (FAF) ELGAP | (IF) ELBEX | (IAF) BIDUS | (IAF) BIPOP | (IAF) NYLON |
| 2 000 (1990) | 2 000 (1990) | 2 000 | 3 400 | 3 000 | 3 000 |



| | | | | | | | | | |
|----------------------|--------|---|-------------|-------------|-------------|-------------|-----------|-------------|-------------|
| | | DISPLACED THR NAUTICAL MILES FROM DTHR RWY 20R | | | | | | | |
| | | OCA (OCH) | | | | | | | |
| Category of Aircraft | | A | B | C | D | | | | |
| LNAV/VNAV | 2.5% | 690 (680) | | | | | | | |
| LNAV | 2.5% | 690 (680) | | | | | | | |
| Fix | | BIDUS | NYLON | BIPOP | ELBEX | ELGAP | RW20R | ENLES | SAMKO |
| Altitude (Height) | | 3400 (3387) | 3000 (2987) | 3000 (2987) | 2000 (1987) | 2000 (1987) | 690 (680) | 2180 (2167) | 3200 (3187) |
| Speed | knots | 80 | 100 | 100 | 120 | 140 | 140 | 160 | 180 |
| FAF - MAP | 6.2 nm | min : s | 4 : 39 | 3 : 44 | 3 : 06 | 2 : 40 | 2 : 20 | 2 : 04 | |
| Rate of descent/GS | | ft/min | 425 | 531 | 637 | 743 | 849 | 955 | |