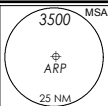


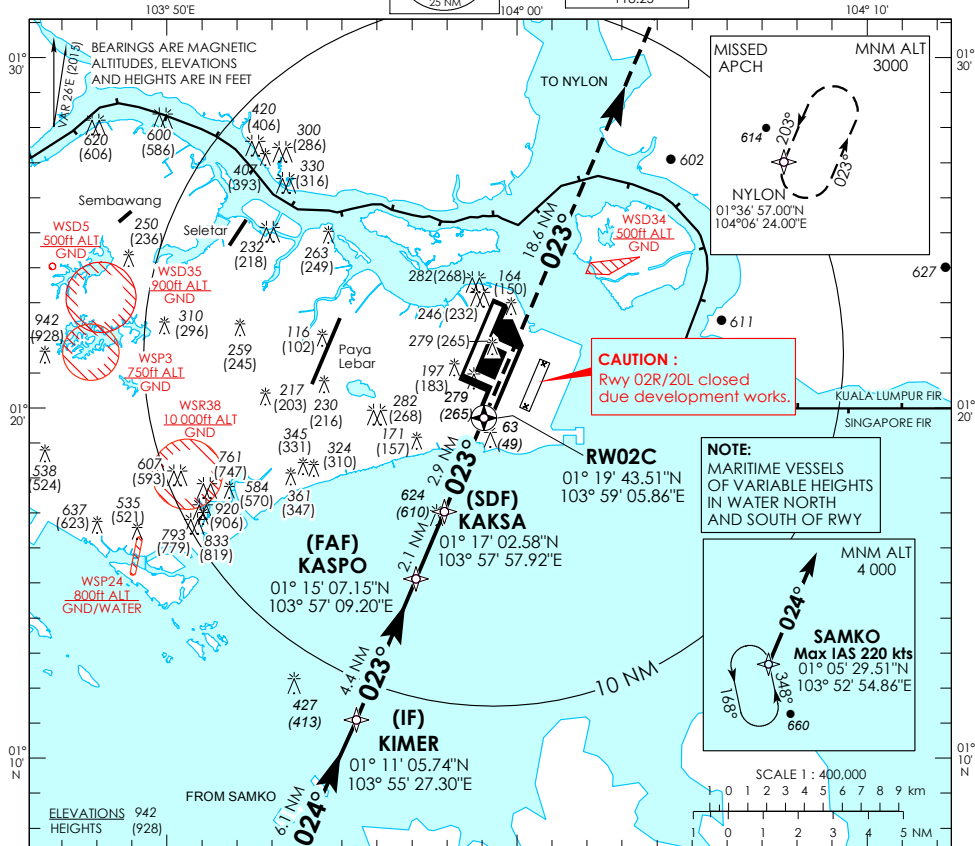
**INSTRUMENT APPROACH CHART**

AERODROME ELEV 22ft  
HEIGHT RELATED TO  
THR RWY 02C - ELEV 14ft



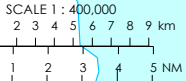
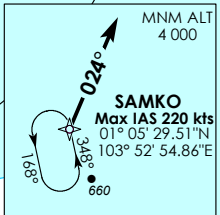
D-ATIS AP ID WSSS	128.6
APP	120.3
TWR	119.3
	118.6
	118.25

**SINGAPORE/ SINGAPORE CHANGI  
RNAV (GNSS) RWY 02C**



**CAUTION :**  
Rwy 02R/20L closed  
due development works.

**NOTE:**  
MARITIME VESSELS  
OF VARIABLE HEIGHTS  
IN WATER NORTH  
AND SOUTH OF RWY



Transition Level : FL 130  
Transition Alt : 11 000

MISSED APPROACH:  
CLIMB DIRECT TO NYLON  
TO JOIN THE HOLDING AT  
3000FT OR ABOVE OR AS  
DIRECTED BY ATC.

MINIMUM TEMPERATURE  
FOR BARO-VNAV  
APPROACHES: 5°C

ELEV 14  
(THR RWY 02C)

		NAUTICAL MILES FROM THR RWY 02C							
Category of Aircraft		A		B		C		D	
LNAV	2.5%			490 (480)		OCA (OCH)			
LNAV without SDF	2.5%			890 (880)		OCA (OCH)			
LNAV/VNAV	2.5%			360 (350)		OCA (OCH)			
Fix		SAMKO	KIMR	KASPO	KAKSA	RW02C	NYLON		
Altitude (Height)		4000 (3986)	2000 (1986)	1600 (1586)	990 (976)	490 (476)	3000 (2986)		
Speed	knots	80	100	120	140	160	180		
FAF - MAPt 5nm	min : s	3 : 45	3 : 00	2 : 30	2 : 09	1 : 53	1 : 40		
Rate of descent/GS	ft/min	425	531	637	743	849	955		