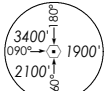


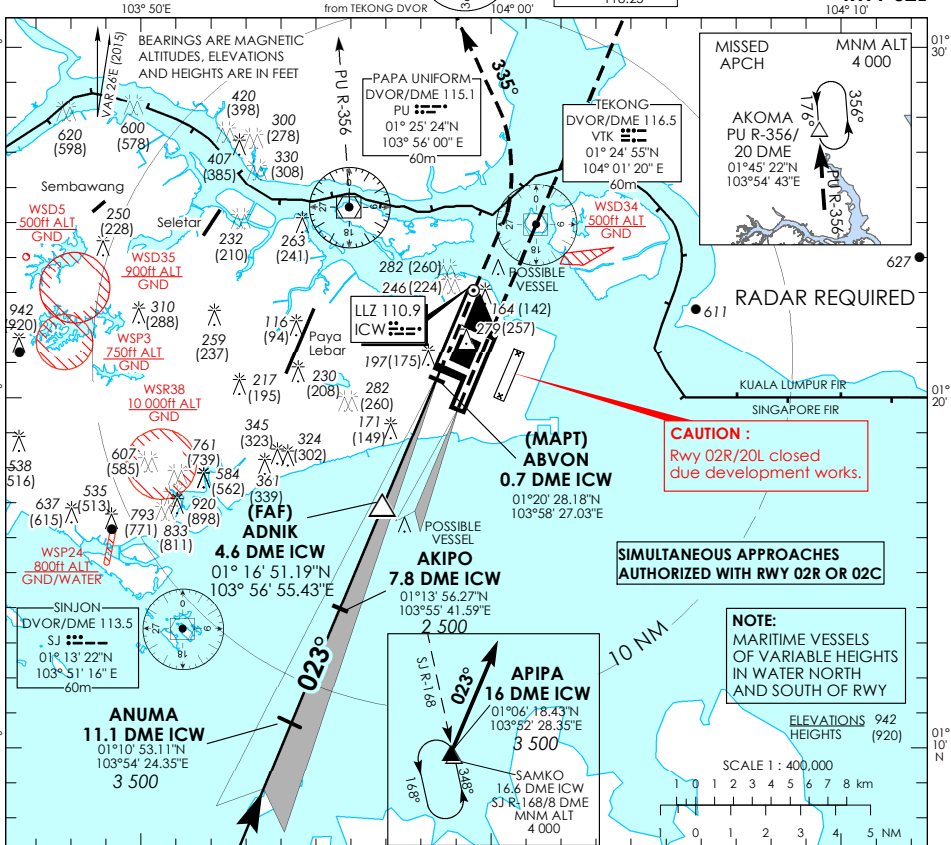
INSTRUMENT APPROACH CHART

AERODROME ELEV **22ft**
HEIGHT RELATED TO
THR RWY 02L - ELEV **22ft**



D-ATIS AP ID WSSS	128.6
APP	120.3
TWR	119.3
	118.6
	118.25

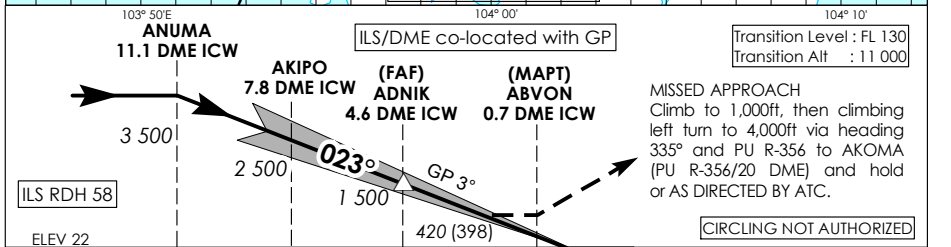
SINGAPORE/ SINGAPORE CHANGI ICW ILS/DME RWY 02L



CAUTION :
Rwy 02R/20L closed due development works.

SIMULTANEOUS APPROACHES AUTHORIZED WITH RWY 02R OR 02C

NOTE:
MARTIME VESSELS OF VARIABLE HEIGHTS IN WATER NORTH AND SOUTH OF RWY



Transition Level : FL 130
Transition Alt : 11 000

MISSED APPROACH
Climb to 1,000ft, then climbing left turn to 4,000ft via heading 335° and PU R-356 to AKOMA (PU R-356/20 DME) and hold or AS DIRECTED BY ATC.

CIRCLING NOT AUTHORIZED

* TIMING NOT AUTHORIZED WHEN GP INOP

Category of Aircraft	OCA (OCH)					
	A	B	C	D	D ₁	
Straight-in	CAT I ILS	173 (151)	187 (165)	203 (181)	216 (194)	219 (197)
	CAT II ILS	88 (66)	98 (76)	108 (86)	127 (105)	127 (105)
	GP INOP	420 (398)				
Distance	4 DME		3 DME		2 DME	
Altitude (Height)	1290 (1268)		970 (948)		660 (638)	
Speed	knots	70	120	150	185	
FAF - MAPT 3.9nm	min : s *	3 : 21	1 : 57	1 : 34	1 : 16	
Rate of descent/GS	ft/min	370	635	795	980	