

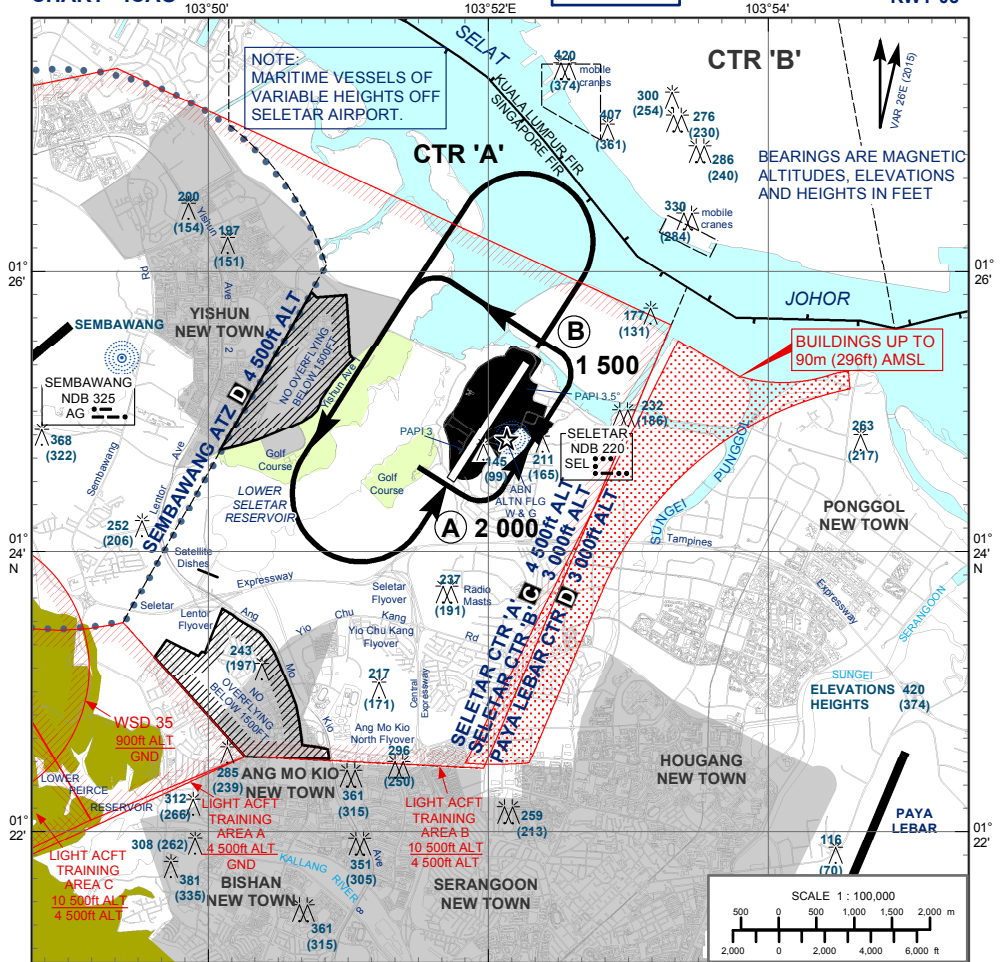
VISUAL APPROACH CHART - ICAO

**AD ELEV 46 ft
HEIGHTS RELATED TO AD ELEV**

APP 120.3
TWR 118.45
270.4

SINGAPORE/SELETAR

RWY 03



JOINING PROCEDURE - RWY 03

- 1) Join overhead at 2 000ft ALT or as cleared by ATC and at a speed of not more than 170kt.
- 2) When over Position A, join the circuit crossing the upwind end of the runway (Position B) at 1 500ft ALT or above or at the altitude cleared by ATC.
- 3) Joining aircraft shall give way to circuit traffic already on downwind.

CAUTION

- a) Pilots are required to keep clear of Sembawang ATZ.
- b) Pilots should not fly to the east of the runway. This is to keep clear of tall buildings up to 90m (296ft) AMSL to the east of Seletar CTR. (See area shaded in red).

Built-up residential areas - No overflying below 1 500ft (458m). Aircraft types which are unable to safely manoeuvre clear of the restricted areas are not allowed to operate at Seletar Airport.

PAPI 3°	RUNWAY	
	03	21
Pilot's eye height over the threshold when the following PAPI lights come into view		
2 white lights and 2 red lights (MEHT)*	15.2m	15.3m
3 white lights and 1 red light	17.1m	16.6m
4 white lights	18.8m	18.0m

*MEHT : Minimum Eye Height Over the Threshold.

Note : Aircraft with eye-to-wheel height greater than 6.3 metres are advised to fly with 2 white and 2 red lights visible so as to achieve sufficient wheel clearance.

Note:

- 1) Pilots are to be advised of the steel structure 91m (300ft) AMSL 2nm north of the airfield.
- 2) Pilots are required to keep their turns within Seletar Control Zone.
- 3) Pilots are required to keep clear of Sembawang CTR and Paya Lebar CTR.