

**STANDARD ARRIVAL CHART
RNAV (GNSS) -
INSTRUMENT (STAR)**

ACC 134.4
APP 124.6 / 120.3
ARR 119.3
TWR 118.6 / 118.25

TRANSITION ALTITUDE
11 000ft

D-ATIS AP ID-WSSS
128.6

**SINGAPORE/Singapore Changi
RWY 02L/C
REPOV ONE ALPHA ARRIVAL
REPOV 1A**

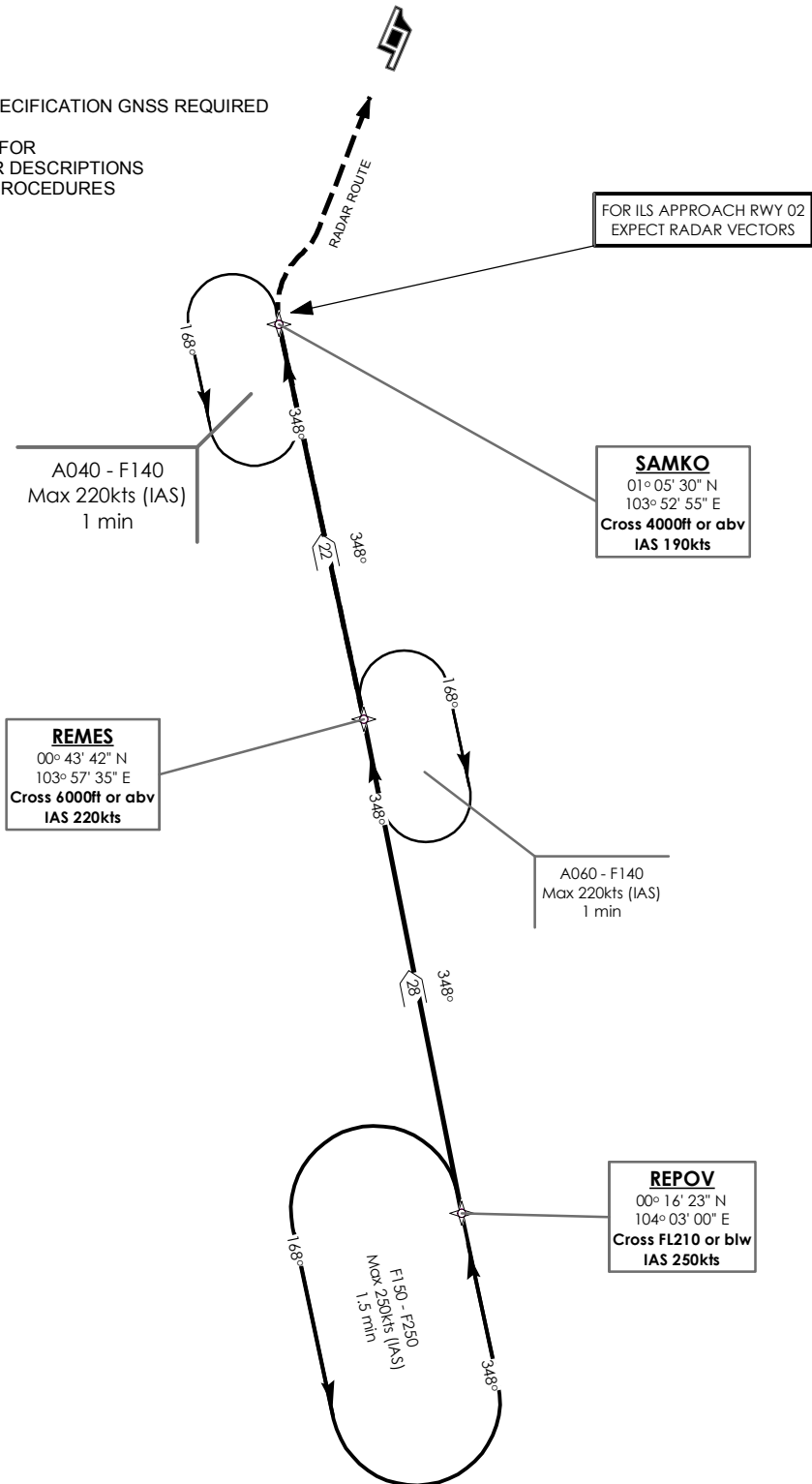
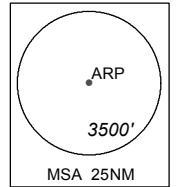
ELEV, ALT IN FEET
BEARINGS, TRACKS AND
RADIALS ARE MAGNETIC
VAR 26°E (2015)

DISTANCES IN NM

NOTE: RADAR REQUIRED

NOTE: RNAV-1 NAVIGATION SPECIFICATION GNSS REQUIRED

NOTE: REFER TO BACK PAGE FOR
- FORMAL AND TABULAR DESCRIPTIONS
- RADIO COM FAILURE PROCEDURES



NOT TO SCALE

REPOV 1A (STAR) RNAV GNSS RWY 02L/02C - DESCRIPTIONS

Formal & Abbreviated Descriptions

Formal Description	Abbreviated Description	Path Terminator	Fly-Over required
From REPOV at or below FL210, speed 250kts. To REMES at or above 6000ft, speed 220kts. To SAMKO at or above 4000ft, speed 190kts.	REPOV [FL210-; K250] - REMES [A060+; K220] - SAMKO [A040+; K190]	IF TF TF	N N N

Tabular Descriptions

Path Term	Waypoint Name	Fly-Over	Course °M(°T)	Magnetic Variation	Turn Direction	Altitude	Speed Limit	Navigation Spec
IF	REPOV	-	-	-0.5	-	FL210-	K250	RNAV1
TF	REMES	-	348(348.7)	-0.5	-	A060+	K220	RNAV1
TF	SAMKO	-	348(348.5)	-0.5	-	A040+	K190	RNAV1

RADIO COMMUNICATIONS FAILURE PROCEDURE

1	SET TRANSPONDER TO MODE A/C CODE 7600
2	<p>When cleared via REPOV 1A by Singapore ATC</p> <p>(a) Maintain last assigned flight level or altitude and proceed on REPOV 1A to SAMKO</p> <p>(b) From SAMKO commence descent and carry out appropriate landing procedure for RWY 02 as close as possible to EAT or ETA</p> <p>(c) If unable to effect a landing, refer to Singapore AIP for missed approach procedure</p>
3	<p>No clearance or instruction received from Singapore ATC</p> <p>- Refer to Singapore AIP for radio communications failure procedure</p>