

**STANDARD DEPARTURE CHART
RNAV (GNSS) -
INSTRUMENT (SID)**

TWR 118.6 / 118.25
APP 120.3
ACC 133.25

TRANSITION ALTITUDE
11 000ft

D-ATIS AP ID-WSSS
128.6

**SINGAPORE/Singapore Changi
RWY 02L/20R
ADMIM DEPARTURES
ADMIM 1E (R02L)
ADMIM 1F (R20R)**

ELEV, ALT IN FEET
BEARINGS, TRACKS AND
RADIALS ARE MAGNETIC
VAR 26°E (2015)

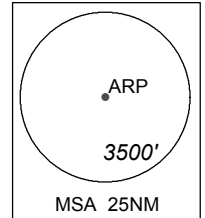
DISTANCES IN NM

NOTE: RADAR REQUIRED

NOTE: ACFT UNABLE TO FLY THE SID
PROFILE SHALL INFORM ATC
PRIOR TO DEPARTURE AND TO
EXPECT RADAR VECTURING,
IF NECESSARY

NOTE: RNAV-1 NAVIGATION SPECIFICATION
GNSS REQUIRED

NOTE: REFER TO BACK PAGE FOR
- FORMAL AND TABULAR DESCRIPTIONS
- RADIO COM FAILURE PROCEDURES



GENERAL INFORMATION

**INITIAL CLIMB
3000FT OR AS DIRECTED BY ATC**

ALL SIDs INCLUDE NOISE PREFERENTIAL ROUTES.

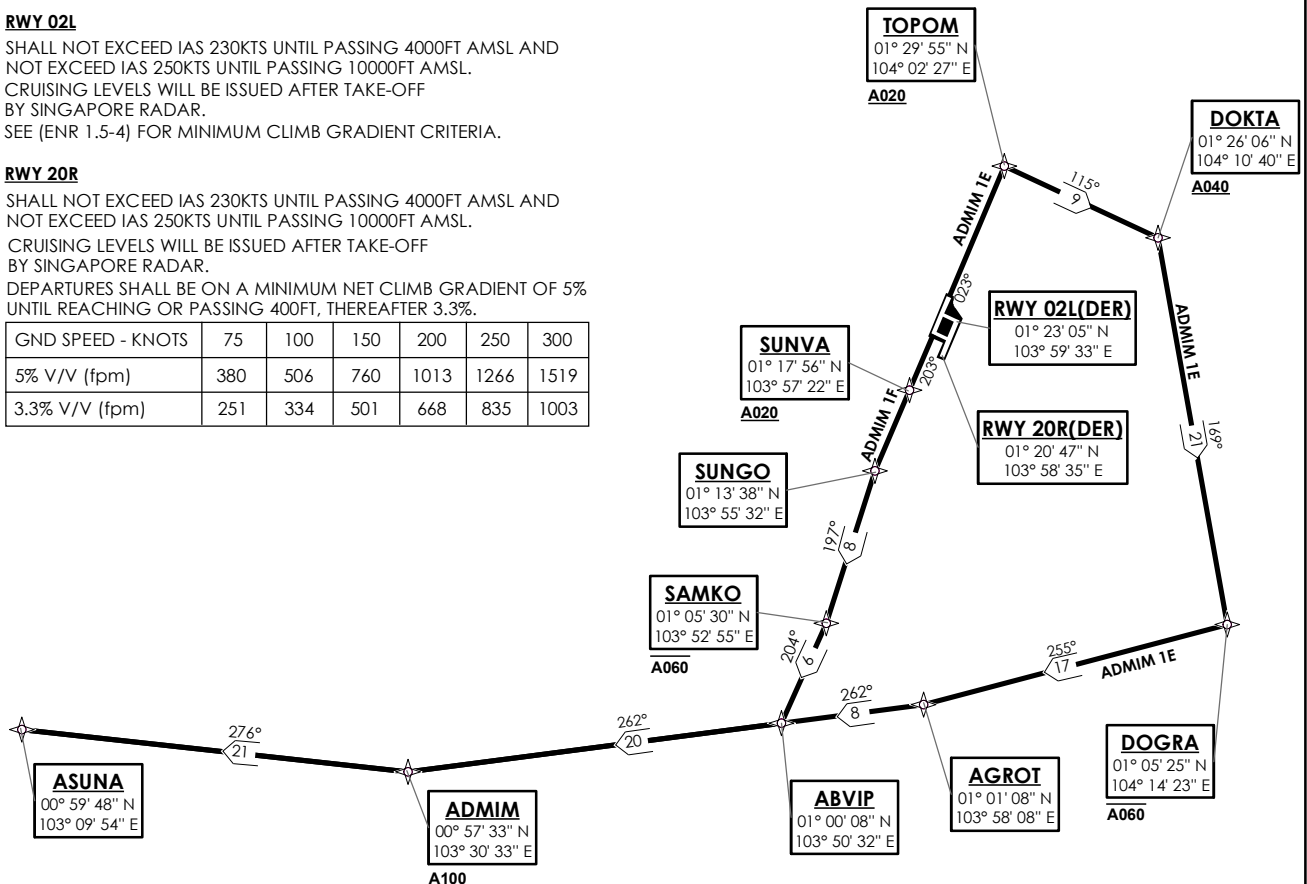
RWY 02L

SHALL NOT EXCEED IAS 230KTS UNTIL PASSING 4000FT AMSL AND
NOT EXCEED IAS 250KTS UNTIL PASSING 10000FT AMSL.
CRUISING LEVELS WILL BE ISSUED AFTER TAKE-OFF
BY SINGAPORE RADAR.
SEE (ENR 1.5-4) FOR MINIMUM CLIMB GRADIENT CRITERIA.

RWY 20R

SHALL NOT EXCEED IAS 230KTS UNTIL PASSING 4000FT AMSL AND
NOT EXCEED IAS 250KTS UNTIL PASSING 10000FT AMSL.
CRUISING LEVELS WILL BE ISSUED AFTER TAKE-OFF
BY SINGAPORE RADAR.
DEPARTURES SHALL BE ON A MINIMUM NET CLIMB GRADIENT OF 5%
UNTIL REACHING OR PASSING 400FT, THEREAFTER 3.3%.

GND SPEED - KNOTS	75	100	150	200	250	300
5% V/V (fpm)	380	506	760	1013	1266	1519
3.3% V/V (fpm)	251	334	501	668	835	1003



NOT TO SCALE

ADMIM 1E (SID) RNAV GNSS RWY 02L - DESCRIPTIONS

Formal & Abbreviated Descriptions

Formal Description	Abbreviated Description	Path Terminator	Fly-Over required
To TOPOM on course 023° at or above 2000ft, turn right. To DOKTA at or above 4000ft, turn right. To DOGRA at or below 6000ft, turn right. To AGROT, turn right. To ABVIP. To ADMIM at or above 10000ft, turn right. To ASUNA.	TOPOM [M023; A020+; R] -	CF	N
	DOKTA [A040+; R] -	TF	N
	DOGRA [A060-; R] -	TF	N
	AGROT [R] -	TF	N
	ABVIP -	TF	N
	ADMIM [A100+; R] -	TF	N
ASUNA	TF	N	

Tabular Descriptions

Path Term	Waypoint Name	Fly-Over	Course °M(°T)	Magnetic Variation	Turn Direction	Altitude	Speed Limit	Navigation Spec
CF	TOPOM	-	023(022.5)	-0.5	R	A020+	-	RNAV1
TF	DOKTA	-	115(114.5)	-0.5	R	A040+	-	RNAV1
TF	DOGRA	-	169(168.5)	-0.5	R	A060-	-	RNAV1
TF	AGROT	-	255(254.5)	-0.5	R	-	-	RNAV1
TF	ABVIP	-	262(261.5)	-0.5	-	-	-	RNAV1
TF	ADMIM	-	262(261.5)	-0.5	R	A100+	-	RNAV1
TF	ASUNA	-	276(275.5)	-0.5	-	-	-	RNAV1

ADMIM 1F (SID) RNAV GNSS RWY 20R - DESCRIPTIONS

Formal & Abbreviated Descriptions

Formal Description	Abbreviated Description	Path Terminator	Fly-Over required
To SUNVA on course 203° at or above 2000ft. To SUNGO, turn left. To SAMKO at or below 6000ft, turn right. To ABVIP, turn right. To ADMIM at or above 10000ft, turn right. To ASUNA.	SUNVA [M203; A020+] -	CF	N
	SUNGO [L] -	TF	N
	SAMKO [A060-; R] -	TF	N
	ABVIP [R] -	TF	N
	ADMIM [A100+; R] -	TF	N
	ASUNA	TF	N

Tabular Descriptions

Path Term	Waypoint Name	Fly-Over	Course °M(°T)	Magnetic Variation	Turn Direction	Altitude	Speed Limit	Navigation Spec
CF	SUNVA	-	203(202.5)	-0.5	-	A020+	-	RNAV1
TF	SUNGO	-	203(202.5)	-0.5	L	-	-	RNAV1
TF	SAMKO	-	197(197.5)	-0.5	R	A060-	-	RNAV1
TF	ABVIP	-	204(203.5)	-0.5	R	-	-	RNAV1
TF	ADMIM	-	262(261.5)	-0.5	R	A100+	-	RNAV1
TF	ASUNA	-	276(275.5)	-0.5	-	-	-	RNAV1

RADIO COMMUNICATIONS FAILURE PROCEDURE

1	SET TRANSPONDER TO MODE A/C CODE 7600
2	<p>COMMUNICATIONS FAILURE OCCURS IMMEDIATELY AFTER DEPARTURE ON:</p> <p>RWY 02L - PROCEED STRAIGHT AHEAD TO NYLON HOLDING AREA (NHA) CLIMBING TO THE LAST ASSIGNED ALTITUDE, THEREAFTER REFER TO SINGAPORE AIP ON RADIO COMMUNICATIONS FAILURE PROCEDURE.</p> <p>RWY 20R - PROCEED STRAIGHT AHEAD TO SAMKO HOLDING AREA (SHA) CLIMBING TO THE LAST ASSIGNED ALTITUDE, THEREAFTER REFER TO SINGAPORE AIP ON RADIO COMMUNICATIONS FAILURE PROCEDURE.</p>