

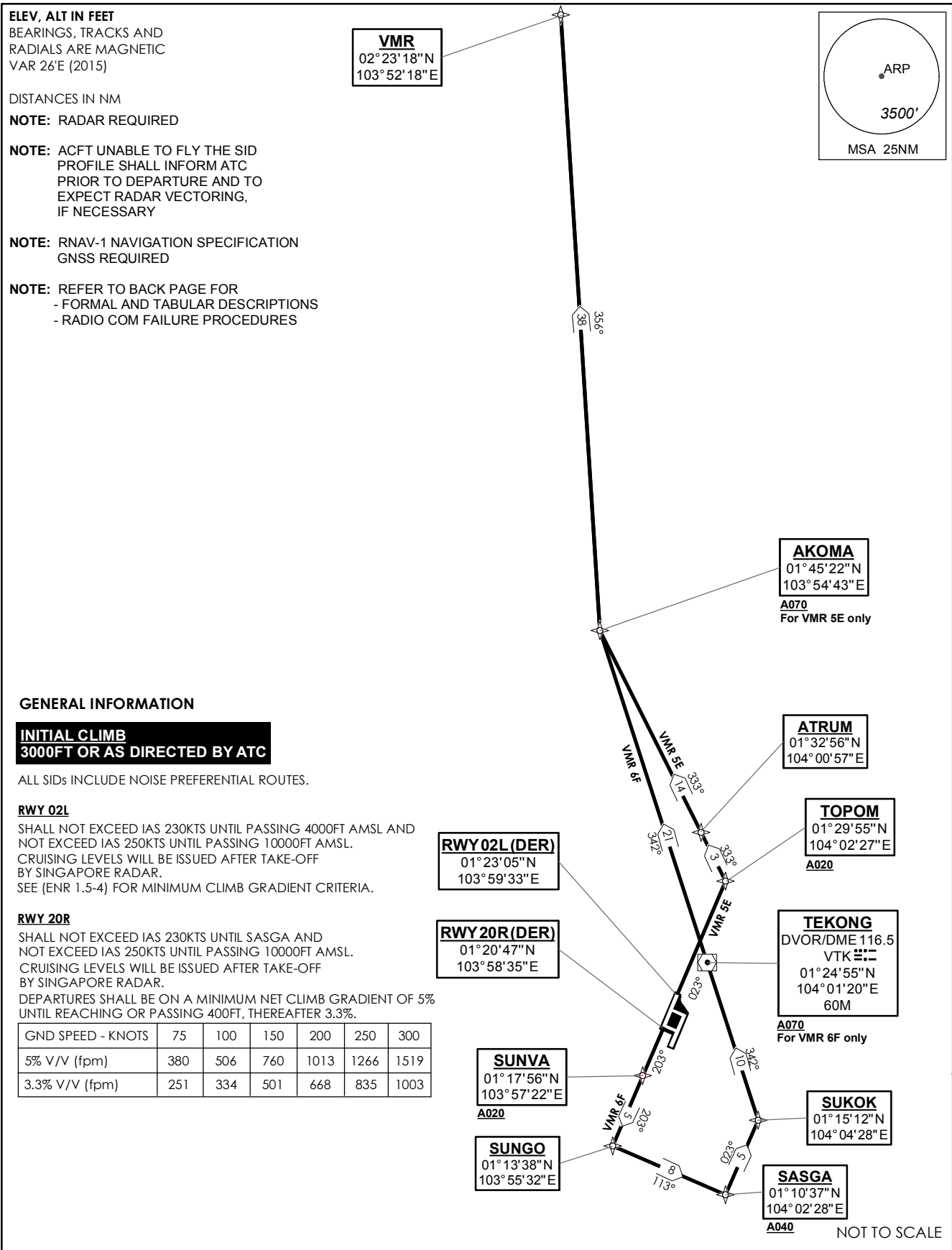
**STANDARD DEPARTURE CHART  
RNAV (GNSS) -  
INSTRUMENT (SID)**

TWR 118.6 / 118.25  
APP 120.3  
ACC 133.8

TRANSITION ALTITUDE  
11 000ft

D-ATIS AP ID-WSSS  
128.6

**SINGAPORE/Singapore Changi  
RWY 02L/20R  
MERSING DEPARTURES  
VMR 5E (R02L)  
VMR 6F (R20R)**



**VMR 5E (SID) RNAV GNSS RWY 02L - DESCRIPTIONS**

**Formal & Abbreviated Descriptions**

| Formal Description  | Abbreviated Description  | Path Terminator | Fly-Over required |
|---|--------------------------|-----------------|-------------------|
| To TOPOM on course 023° at or above 2000ft, turn left. To ATRUM. To AKOMA at or above 7000ft, turn right. To VMR. | TOPOM [M023; A020+; L] - | CF              | N                 |
|   | ATRUM -                  | TF              | N                 |
|   | AKOMA [A070+; R] -       | TF              | N                 |
|   | VMR                      | TF              | N                 |

**Tabular Descriptions**

| Path Term | Waypoint Name | Fly-Over | Course °M(°T) | Magnetic Variation | Turn Direction | Altitude | Speed Limit | Navigation Spec |
|-----------|---------------|----------|---------------|--------------------|----------------|----------|-------------|-----------------|
| CF        | TOPOM         | -        | 023(022.5)    | -0.5               | L              | A020+    | -           | RNAV1           |
| TF        | ATRUM         | -        | 333(332.5)    | -0.5               | -              | -        | -           | RNAV1           |
| TF        | AKOMA         | -        | 333(332.5)    | -0.5               | R              | A070+    | -           | RNAV1           |
| TF        | VMR           | -        | 356(355.5)    | -0.5               | -              | -        | -           | RNAV1           |

**VMR 6F (SID) RNAV GNSS RWY 20R - DESCRIPTIONS**

**Formal & Abbreviated Descriptions**

| Formal Description   | Abbreviated Description  | Path Terminator | Fly-Over required |
|--|--------------------------|-----------------|-------------------|
| To SUNVA on course 203° at or above 2000ft. To SUNGO, turn left. To SASGA at or above 4000ft, speed 230kts, turn left. To SUKOK, turn left. To VTK at or above 7000ft. To AKOMA, turn right. To VMR. | SUNVA [M203; A020+] -    | CF              | N                 |
|  | SUNGO [L] -              | TF              | N                 |
|  | SASGA [A040+; K230; L] - | TF              | N                 |
|  | SUKOK [L] -              | TF              | N                 |
|  | VTK [A070+] -            | TF              | N                 |
|  | AKOMA [R] -              | TF              | N                 |
|  | VMR                      | TF              | N                 |

**Tabular Descriptions**

| Path Term | Waypoint Name | Fly-Over | Course °M(°T) | Magnetic Variation | Turn Direction | Altitude | Speed Limit | Navigation Spec |
|-----------|---------------|----------|---------------|--------------------|----------------|----------|-------------|-----------------|
| CF        | SUNVA         | -        | 203(202.5)    | -0.5               | -              | A020+    | -           | RNAV1           |
| TF        | SUNGO         | -        | 203(202.5)    | -0.5               | L              | -        | -           | RNAV1           |
| TF        | SASGA         | -        | 113(113.3)    | -0.5               | L              | A040+    | K230        | RNAV1           |
| TF        | SUKOK         | -        | 023(023.6)    | -0.5               | L              | -        | -           | RNAV1           |
| TF        | VTK           | -        | 342(341.5)    | -0.5               | -              | A070+    | -           | RNAV1           |
| TF        | AKOMA         | -        | 342(341.5)    | -0.5               | R              | -        | -           | RNAV1           |
| TF        | VMR           | -        | 356(355.5)    | -0.5               | -              | -        | -           | RNAV1           |

**RADIO COMMUNICATIONS FAILURE PROCEDURE**

|   |   |
|---|---|
| 1 | <b>SET TRANSPONDER TO MODE A/C CODE 7600</b>  |
| 2 | <p><b>COMMUNICATIONS FAILURE OCCURS IMMEDIATELY AFTER DEPARTURE ON:</b></p> <p><b>RWY 02L</b> - PROCEED STRAIGHT AHEAD TO NYLON HOLDING AREA (NHA) CLIMBING TO THE LAST ASSIGNED ALTITUDE, THEREAFTER REFER TO SINGAPORE AIP ON RADIO COMMUNICATIONS FAILURE PROCEDURE.</p> <p><b>RWY 20R</b> - PROCEED STRAIGHT AHEAD TO SAMKO HOLDING AREA (SHA) CLIMBING TO THE LAST ASSIGNED ALTITUDE, THEREAFTER REFER TO SINGAPORE AIP ON RADIO COMMUNICATIONS FAILURE PROCEDURE.</p> |