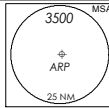


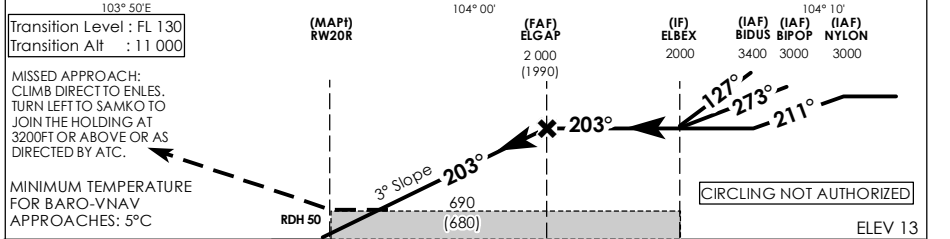
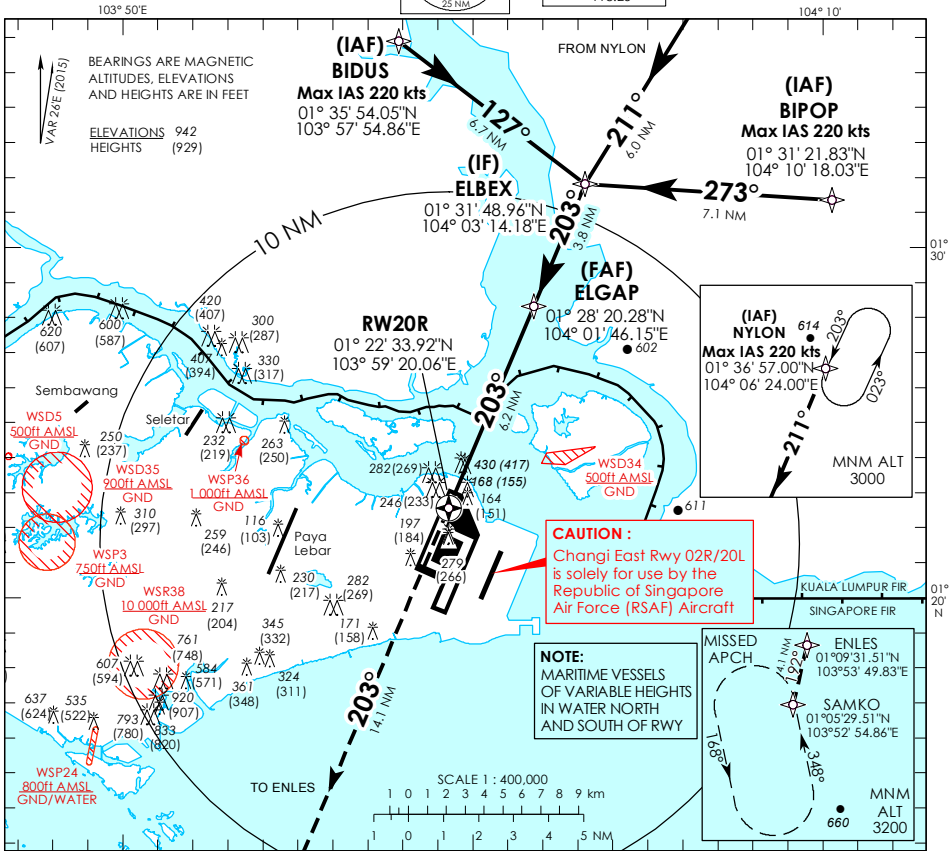
**INSTRUMENT  
APPROACH  
CHART - ICAO**

AERODROME ELEV 22ft  
HEIGHT RELATED TO  
DTHR RWY 20R - ELEV 13ft



D-ATIS	AP ID	WSS
APP	128.6	
TWR	119.3	
	118.6	
	118.25	

**SINGAPORE/  
SINGAPORE CHANGI  
RNAV (GNSS) RWY 20R**



Transition Level : FL 130		(MAP) RW20R	(FAF) ELGAP	(IF) ELBEX	(IAF) BIDUS	(IAF) BIPOP	(IAF) NYLON		
Transition Alt : 11 000			2 000 (1990)	2000	3400	3000	3000		
MISSED APPROACH: CLIMB DIRECT TO ENLES. TURN LEFT TO SAMKO TO JOIN THE HOLDING AT 3200FT OR ABOVE OR AS DIRECTED BY ATC.									
MINIMUM TEMPERATURE FOR BARO-VNAV APPROACHES: 5°C									
RDH 50									
DISPLACED THR									
NAUTICAL MILES FROM DTHR RWY 20R									
OCA (OCH)									
Category of Aircraft		A	B	C	D				
LNAV/VNAV	2.5%	690 (680)							
LNAV	2.5%	690 (680)							
Fix		BIDUS	NYLON	BIPOP	ELBEX	ELGAP	RW20R	ENLES	SAMKO
Altitude (Height)		3400 (3387)	3000 (2987)	3000 (2987)	2000 (1987)	2000 (1987)	690 (680)	2180 (2167)	3200 (3187)
Speed	knots	80	100	120	140	140	160	180	
FAF - MAP	6.2 nm	min : s	4 : 39	3 : 44	3 : 06	2 : 40	2 : 20	2 : 04	
Rate of descent	/GS	ft/min	425	531	637	743	849	955	