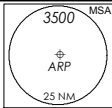


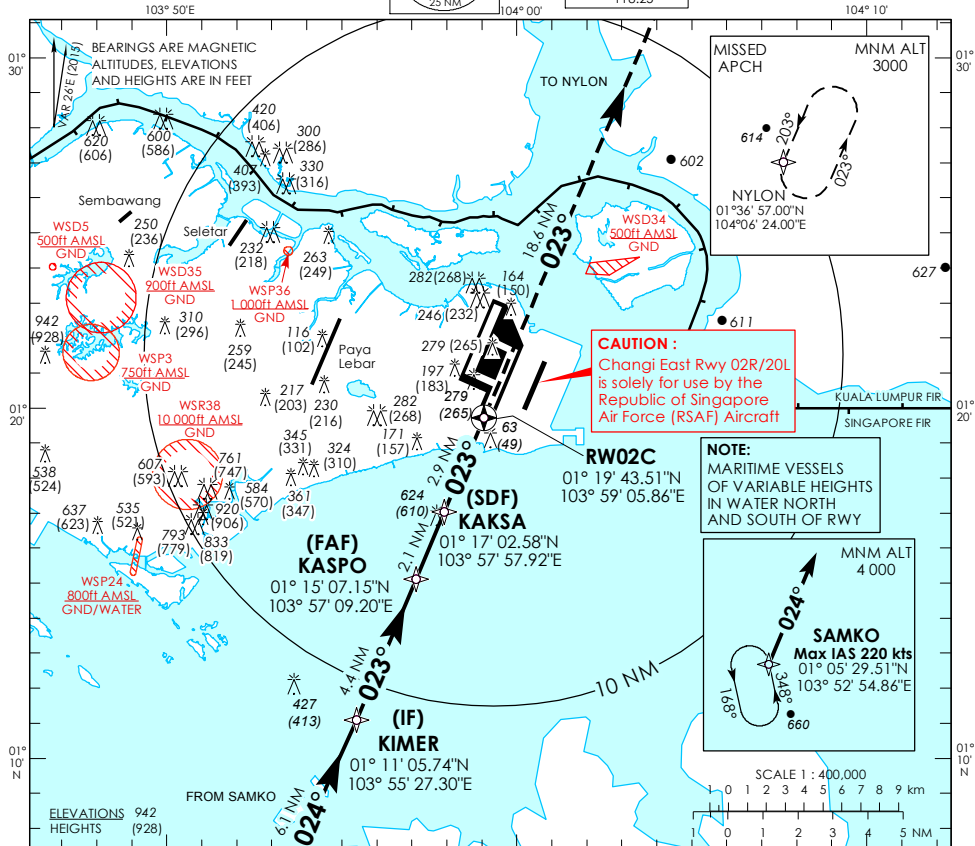
INSTRUMENT APPROACH CHART

AERODROME ELEV 22ft
HEIGHT RELATED TO
THR RWY 02C - ELEV 14ft



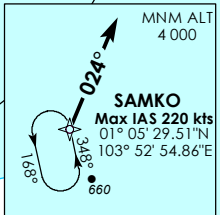
D-ATIS AP ID	WSSS
APP	128.6
TWR	120.3
	119.3
	118.6
	118.25

**SINGAPORE/ SINGAPORE CHANGI
RNAV (GNSS) RWY 02C**



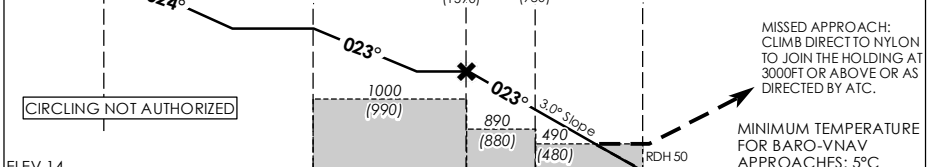
CAUTION :
Changi East Rwy 02R/20L
is solely for use by the
Republic of Singapore
Air Force (RSAF) Aircraft

NOTE:
MARITIME VESSELS
OF VARIABLE HEIGHTS
IN WATER NORTH
AND SOUTH OF RWY



4 000 (IAF) SAMKO	(IF) KIMER	(FAF) KASPO	(SDF) KAKSA	(MAP) RW02C
103° 50'E	104° 00'	104° 00'	104° 10'	
2000	2000	1600 (1590)	990 (980)	

Transition Level : FL 130
Transition Alt : 11 000



ELEV 14 (THR RWY 02C)

NAUTICAL MILES FROM THR RWY 02C					
Category of Aircraft	A	B	C	D	
LNAV	2.5%	490 (480)	OCA (OCH)		
LNAV without SDF	2.5%	890 (880)	OCA (OCH)		
LNAV/VNAV	2.5%	360 (350)	OCA (OCH)		
Fix	SAMKO	KIMER	KASPO	KAKSA	RW02C NYLON
Altitude (Height)	4000 (3986)	2000 (1986)	1600 (1586)	990 (976)	490 (476) 3000 (2986)
Speed	80 knots	100	120	140	160 180
FAF - MAP 5nm	min : s 3 : 45	3 : 00	2 : 30	2 : 09	1 : 53 1 : 40
Rate of descent/GS	ft/min 425	531	637	743	849 955