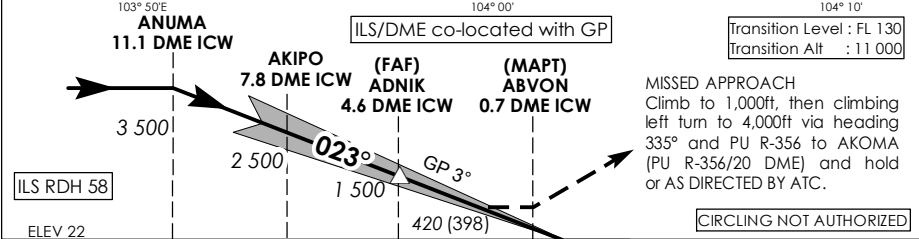
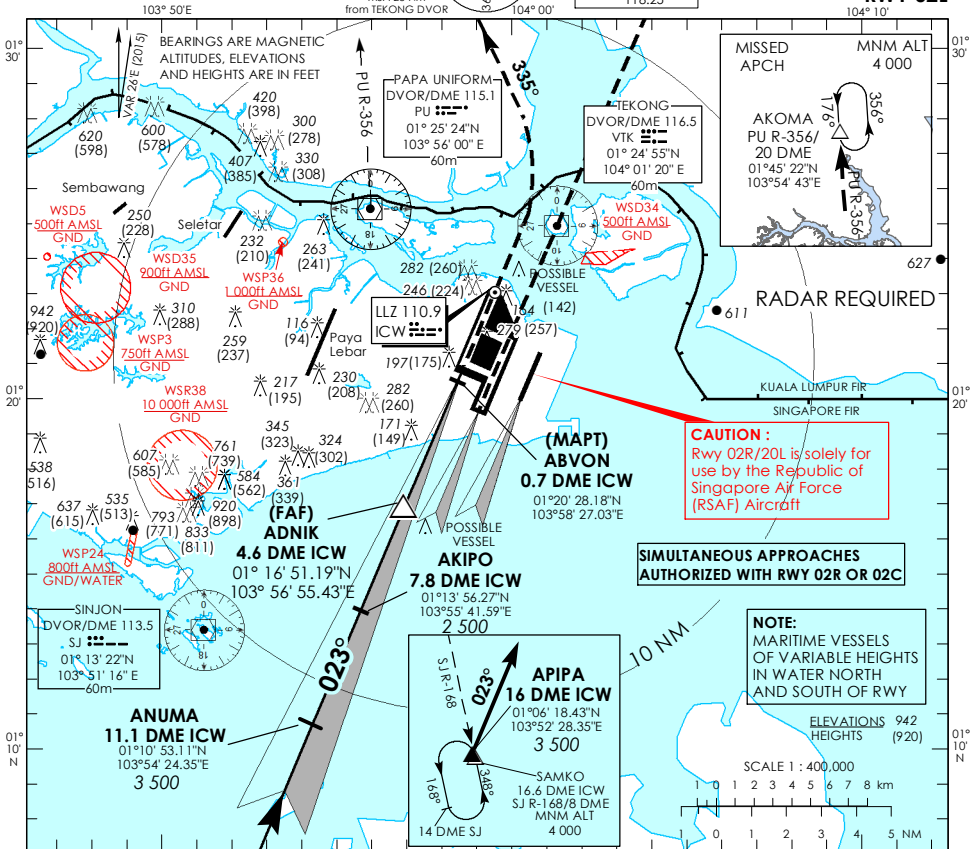


**INSTRUMENT APPROACH CHART**

AERODROME ELEV **22ft**  
HEIGHT RELATED TO  
THR RWY 02L - ELEV **22ft**

|                   |        |
|-------------------|--------|
| D-ATIS AP ID WSSS | 128.6  |
| APP               | 120.3  |
| TWR               | 119.3  |
|                   | 118.6  |
|                   | 118.25 |

**SINGAPORE/ SINGAPORE CHANGI ICW ILS/DME RWY 02L**



\* TIMING NOT AUTHORIZED WHEN GP INOP

| Category of Aircraft | OCA (OCH)   |           |           |           |                |           |
|----------------------|-------------|-----------|-----------|-----------|----------------|-----------|
|                      | A           | B         | C         | D         | D <sub>L</sub> |           |
| Straight-in          | CAT I ILS   | 173 (151) | 187 (165) | 203 (181) | 216 (194)      | 219 (197) |
|                      | CAT II ILS  | 88 (66)   | 98 (76)   | 108 (86)  | 127 (105)      | 127 (105) |
|                      | GP INOP     | 420 (398) |           |           |                |           |
| Distance             | 4 DME       |           | 3 DME     |           | 2 DME          |           |
| Altitude (Height)    | 1290 (1268) |           | 970 (948) |           | 660 (638)      |           |
| Speed                | knots       | 70        | 120       | 150       | 185            |           |
| FAF - MAPT 3.9nm     | min : s *   | 3 : 21    | 1 : 57    | 1 : 34    | 1 : 16         |           |
| Rate of descent/GS   | ft/min      | 370       | 635       | 795       | 980            |           |