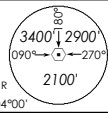


**INSTRUMENT  
APPROACH  
CHART**

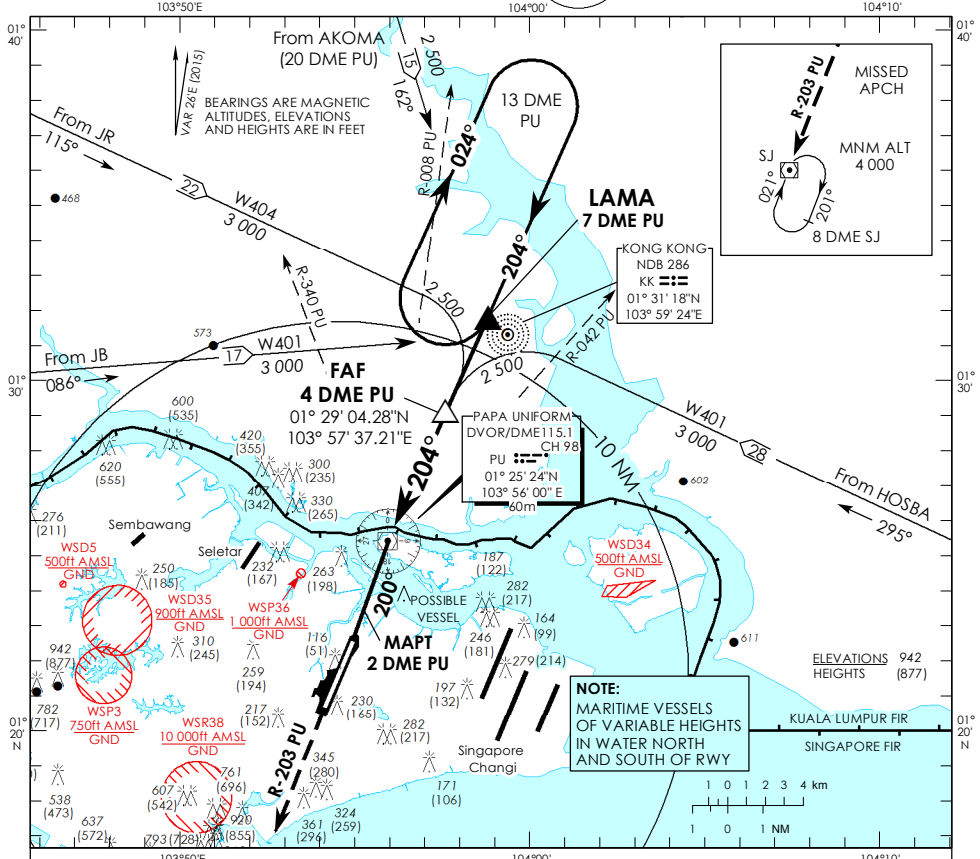
AERODROME ELEV 65ft  
HEIGHT RELATED TO  
AD ELEV - 65ft

MSA 25 NM  
from PAPA UNIFORM DVOR



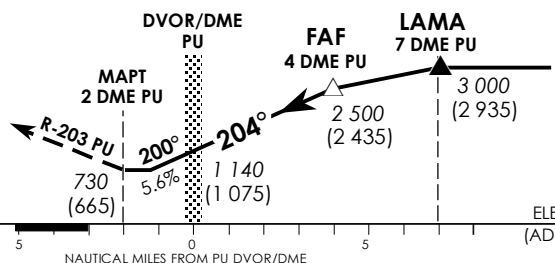
APP 120.3  
119.9  
TWR 118.05

**SINGAPORE/  
PAYA LEBAR  
PU DVOR/DME  
RWY 20**



Transition Level : FL 130  
Transition Alt : 11 000

**MISSED APPROACH**  
Climb to 4 000ft on R-203 PU to SJ DVOR/DME and hold South right turn 021° inbound or AS DIRECTED BY ATC



| OCA (OCH)            |             |             |             |                       |
|----------------------|-------------|-------------|-------------|-----------------------|
| Category of Aircraft | A           | B           | C           | D                     |
| Straight-in          | 730 (665)   |             |             |                       |
| Distance             | 3 DME       | 2 DME       | 1 DME       | PU DVOR/DME           |
| Altitude (Height)    | 2160 (2095) | 1820 (1755) | 1480 (1415) | 1140 (1075) 800 (735) |
| Speed                | knots       | 70          | 120         | 150 185               |
| FAF - MAPT 6nm       | min : s     | 5 : 09      | 3 : 00      | 2 : 24 1 : 57         |
| Rate of descent/GS   | ft/min      | 370         | 635         | 795 980               |