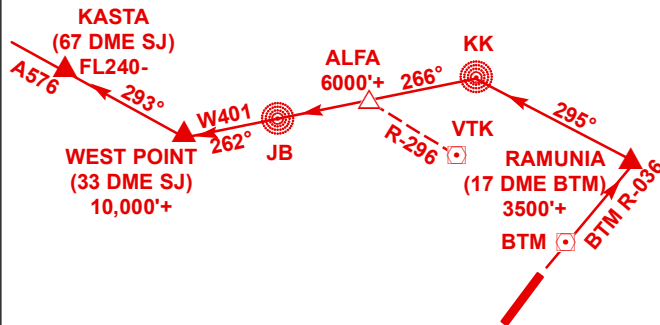


### BATAM AIRPORT - RUNWAY 04 AND 22 STANDARD INSTRUMENT DEPARTURE (SID)

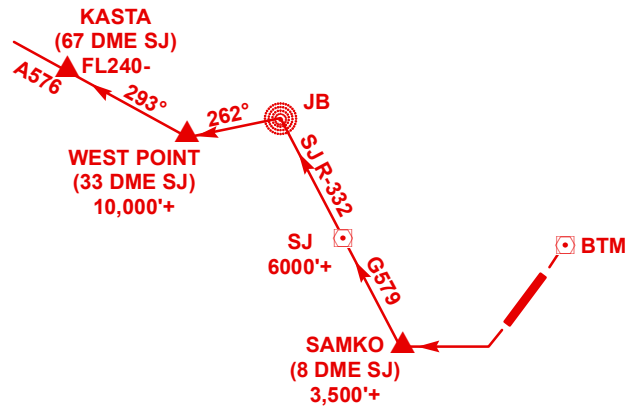
#### RUNWAY 04



#### WEST POINT 2C DEP (ALFA 576 WESTBOUND) (TO MEDAN)

After departure, join Airway W401 at RAMUNIA (BTE R-036/17 DME) at or above 3 500ft and track 295° to KONG KONG NDB. At KONG KONG NDB track 266° to JAYBEE NDB and then track 262° to WEST POINT (33 DME SJ). Cross Point ALFA (TEKONG R-296) at or above 6 000ft and WEST POINT at or above 10 000ft. Turn right at WEST POINT and track 293° to KASTA (67 DME SJ). Cross KASTA at or below FL 240.

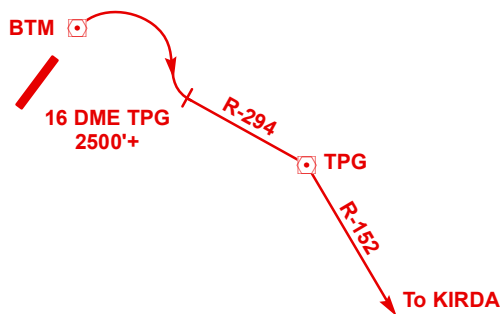
#### RUNWAY 22



#### WEST POINT 2D DEP (ALFA 576 WESTBOUND) (TO MEDAN)

After departure, join Airway G579 at SAMKO (8 DME SJ) at or above 3 500ft. Cross SINJON DVOR/DME at or above 6 000ft. Continue on SINJON R-332 to JAYBEE NDB. At JAYBEE NDB track 262° to join Airway A576 at WEST POINT (33 DME SJ). Cross WEST POINT at or above 10 000ft. Turn right at WEST POINT and track 293° to KASTA (67 DME SJ). Cross KASTA at or below FL 240.

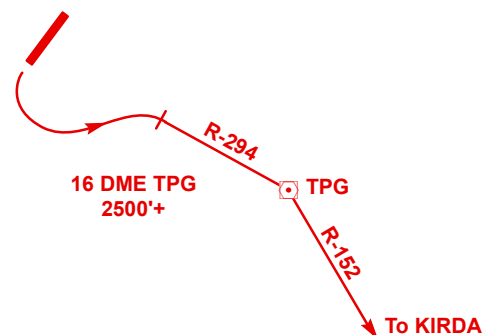
#### RUNWAY 04



#### KIRDA 1C DEP (EASTBOUND) (TO PANGKAL PINANG/JAKARTA)

After departure, turn right to intercept TPG R-294. Then track for TPG VOR/DME to cross TANJUNG PINANG 16 DME at or above 2 500ft. At TPG VOR/DME turn right and proceed on TPG R-152 to KIRDA.

#### RUNWAY 22



#### KIRDA 1C DEP (EASTBOUND) (TO PANGKAL PINANG/JAKARTA)

After departure, turn left to intercept TPG R-294. Then track for TPG VOR/DME to cross TANJUNG PINANG 16 DME at or above 2 500ft. At TPG VOR/DME turn right and proceed on TPG R-152 to KIRDA.