

Contact

Post: REPUBLIC OF SINGAPORE
AERONAUTICAL INFORMATION SERVICES
Civil Aviation Authority of Singapore
60 Airport Boulevard,
Changi Airport Terminal 2, #04-01
Singapore 819643

Tel: (65) 6955 0400
Fax: (65) 6441 0221
AFS: WSSSYNYX
Email: caas_singaporeais@caas.gov.sg
URL: <https://www.caas.gov.sg>
URL: <https://aim-sg.caas.gov.sg>

**AIP Supplement for
Singapore****AIP SUP
161/2025**

Effective from
29 JAN 2026

to
08 FEB 2026

Published on
16 OCT 2025

**FLYING DISPLAYS IN CONJUNCTION WITH THE SINGAPORE AIRSHOW 2026 EXHIBITION
FROM THURSDAY 29 JANUARY TO SUNDAY 08 FEBRUARY 2026****1 INTRODUCTION**

1.1 Flying displays will be conducted during the Singapore Airshow 2026 Exhibition from 03 to 05 February 2026 and 07 to 08 February 2026. Prior to the Exhibition, practices and rehearsals will be conducted from 29 January to 02 February 2026.

1.2 During the periods of practices, rehearsals and flying displays, designated airspace around the Singapore Changi Airport will be closed to non-participating aircraft.

2 RESTRICTIONS AND CLOSURES OF SINGAPORE CHANGI AIRPORT AND DESIGNATED AIRSPACE FOR THE AIRSHOW

2.1 Details of the period of closures for Singapore Changi Airport and the designated airspace are shown in Annex A.

2.2 The airspace to be closed is bounded by the following coordinates:

012517N 1035814E, thence clockwise along the Singapore / Kuala Lumpur FIR boundary, 012017N 1040522E, 011707N 1035618E, 011835N 1035658E, thence anti-clockwise along the eastern coastline of Singapore, 012254N 1035707E and 012517N 1035814E.

2.3 The vertical limits of the airspace closure will be from Ground / Sea Level up to 10,000ft AMSL. Please refer to Annex B for the chart showing the area of the airspace closure.

2.4 Aircraft operators are advised to plan their flights to arrive at or depart from Singapore Changi Airport well before the closure times to avoid the possibility of flights being delayed until the airport and airspace are re-opened.

2.5 Aircraft operators are advised to take into consideration possibilities of airborne delay and plan for sufficient fuel with at least 20 minutes of holding.

3 AIR TRAFFIC FLOW MANAGEMENT (ATFM) MEASURES FOR FLIGHTS ARRIVING AT SINGAPORE CHANGI AIRPORT

3.1 ATFM measures, where necessary, will be in place to regulate the air traffic flow to match the prevailing capacity prior to and after the re-opening of Singapore Changi Airport. Please refer to AIP Singapore ENR 1.9 for details on ATFM procedures.

3.2 When ATFM ground delay programme is implemented, flights arriving at Singapore Changi Airport which are issued with a Calculated Take-Off Time (CTOT) shall comply with the restriction. The compliance window of minus 5 / plus 10 minutes will be measured for CTOT. To ensure orderly flow of traffic arriving at Singapore Changi Airport, flights that are non-compliant or not part of the ground delay programme may expect delay, subject to real-time traffic.

Closure of Singapore Changi Airport and airspace during the Singapore Airshow 2026 Exhibition Flying Displays - Annex A

Singapore Airshow 2026 Exhibition Airspace Closure For Flying Displays - Annex B

Intentionally Left Blank

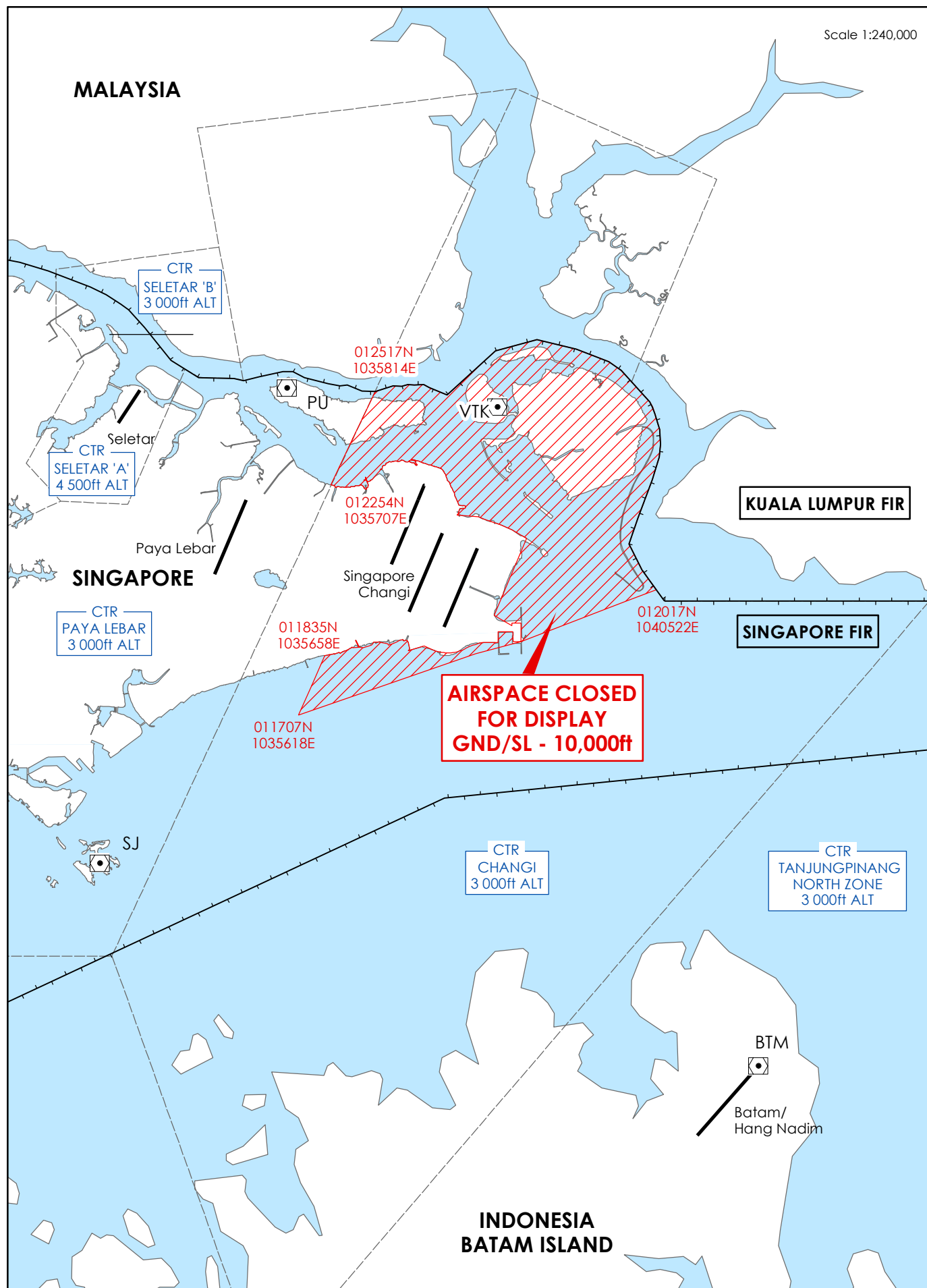
**Closure of Singapore Changi Airport and airspace during the
Singapore Airshow 2026 Exhibition Flying Displays**

Details of the period of closures of Singapore Changi Airport and airspace are shown below:

Type of Activity		Day / Date	Timing (UTC)
a)	Practices	Thursday / 29 January	0230 - 0257
		Friday / 30 January	0230 - 0317
		Saturday / 31 January	0150 - 0251 0730 - 0747
b)	Combined Rehearsals	Sunday / 1 February	0230 - 0401
		Monday / 2 February	0230 - 0320
c)	Flying Displays	Tuesday / 3 February	0400 - 0531
		Wednesday / 4 February	0300 - 0354
		Thursday / 5 February	0300 - 0354
		Saturday / 7 February	0300 - 0354 0730 - 0811
		Sunday / 8 February	0300 - 0343
			0730 - 0811

Intentionally Left Blank

SINGAPORE AIRSHOW 2026 EXHIBITION AIRSPACE CLOSURE FOR FLYING DISPLAYS



Intentionally Left Blank