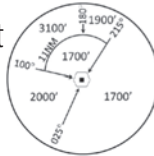


**INSTRUMENT  
APPROACH  
CHART - ICAO**

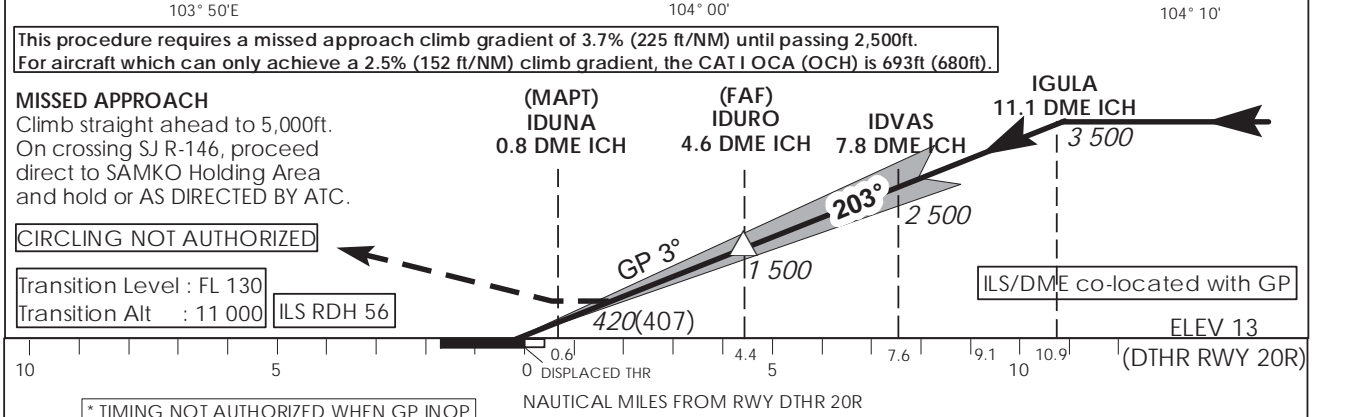
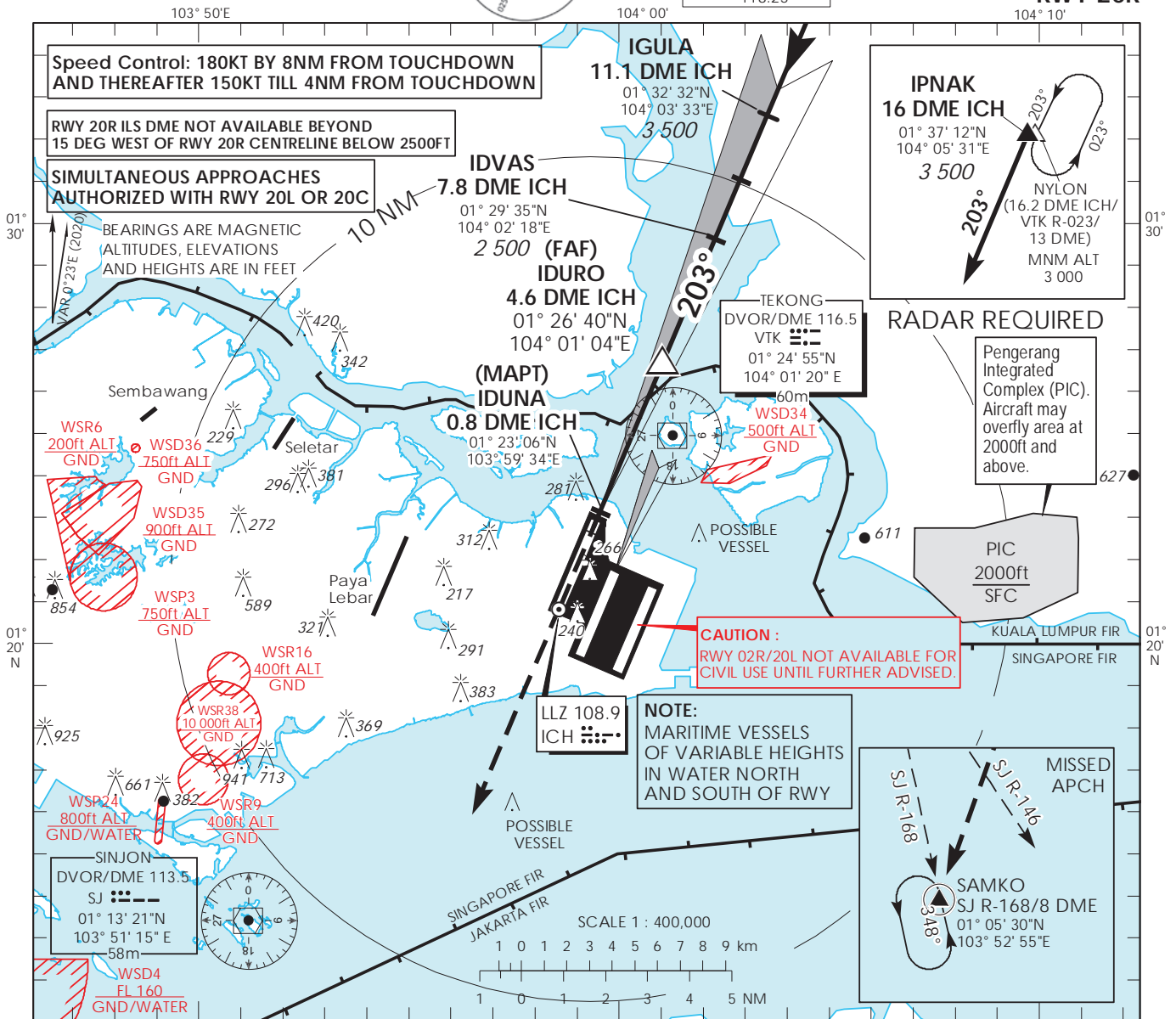
AERODROME ELEV **22ft**  
HEIGHT RELATED TO  
DTHR RWY 20R - ELEV **13ft**



MSA 25 NM  
from TEKONG DVOR

|                   |         |
|-------------------|---------|
| D-ATIS AP ID WSSS | 128.025 |
| APP               | 124.05  |
| TWR               | 119.3   |
|                   | 118.6   |
|                   | 118.25  |

**SINGAPORE/  
SINGAPORE CHANGI  
ICH ILS/DME  
RWY 20R**



|                      |           | OCA (OCH)   |           |           |           |                |
|----------------------|-----------|-------------|-----------|-----------|-----------|----------------|
| Category of Aircraft |           | A           | B         | C         | D         | D <sub>L</sub> |
| Straight-in          | CAT I ILS | 152 (139)   | 159 (146) | 179 (166) | 192 (179) | 195 (182)      |
|                      | GP INOP   | 420 (407)   |           |           |           |                |
| Distance             |           | 4 DME       | 3 DME     | 2 DME     |           |                |
| Altitude (Height)    |           | 1290 (1277) | 970 (957) | 650 (637) |           |                |
| Speed                | knots     | 70          | 120       | 150       | 185       |                |
| FAF - MAPT 3.9nm     | min : s * | 3 : 21      | 1 : 57    | 1 : 34    | 1 : 16    |                |
| Rate of descent/GS   | ft/min    | 370         | 635       | 795       | 980       |                |

Intentionally Left Blank