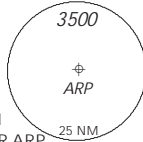
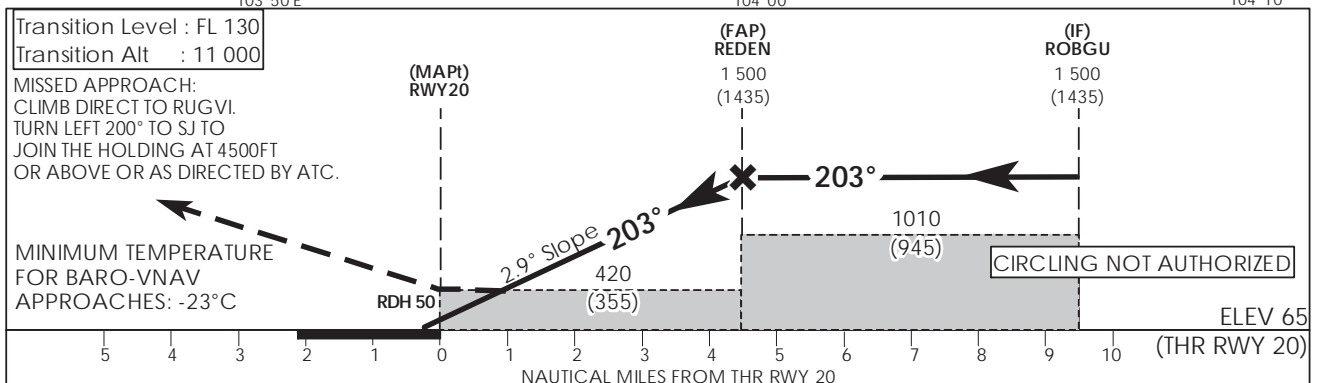
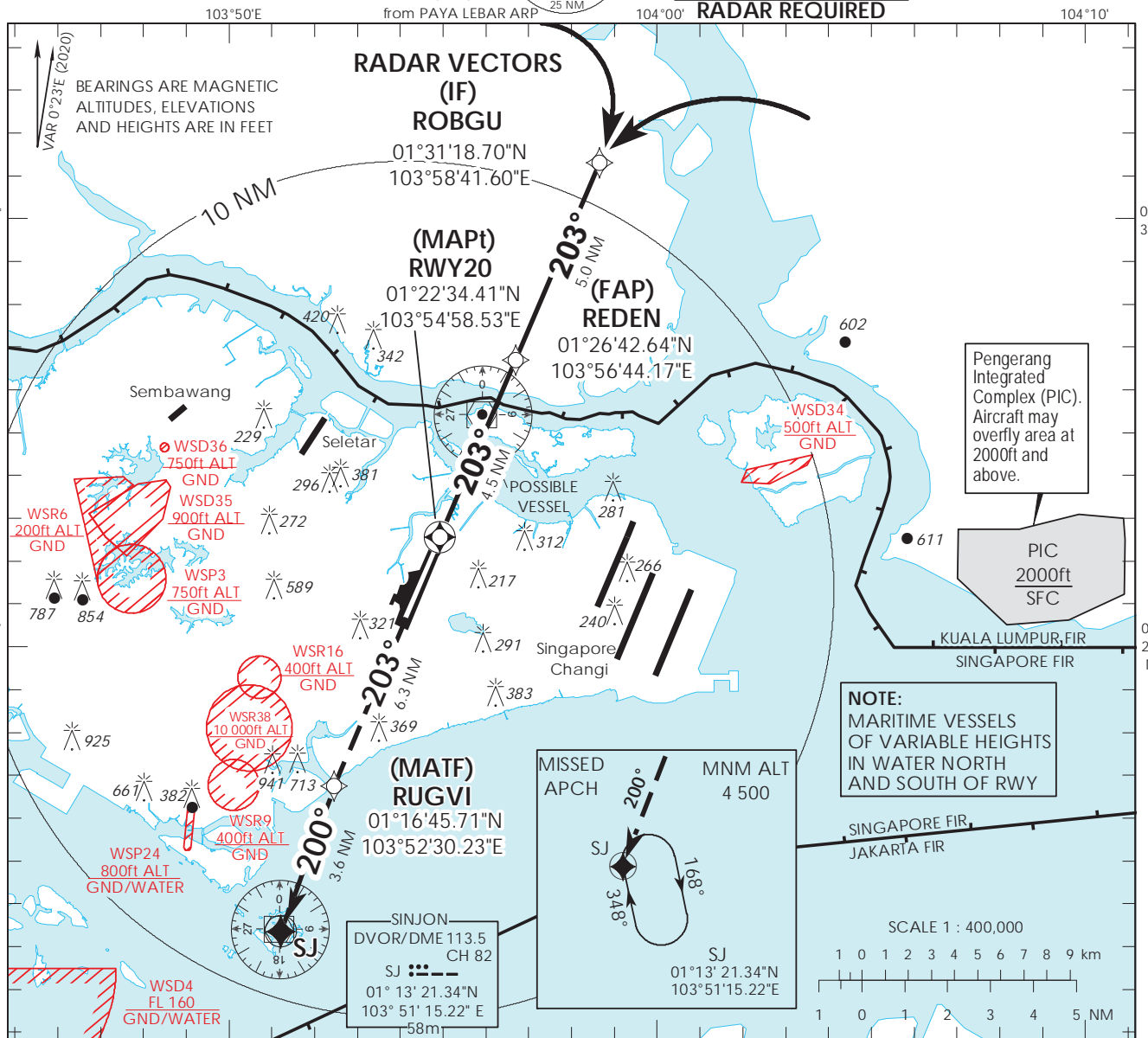


INSTRUMENT APPROACH CHART - ICAO
AERODROME ELEV 65ft
HEIGHT RELATED TO THR RWY 20 - 65ft



ATIS Paya Lebar	148.9
Singapore APP	124.05
Paya Lebar APP	119.9 298.0
Seletar APP	126.025
Paya Lebar TWR	118.05 263.1
Ground Control	130.8 296.0

SINGAPORE/PAYA LEBAR
RNP RWY 20



		OCA (OCH)				
Category of Aircraft		A	B	C	D	
LNAV/VNAV	2.5%			420 (355)		
LNAV	2.5%			420 (355)		
Fix		ROBGU	REDEN	RWY20	RUGVI	SINJON
Altitude (Height)		1500 (1435)	1500 (1435)	420 (355)	1030 (965)	1580 (1515)
Speed	knots	80	100	120	140	160 180
FAP - MAPt 4.5 nm	min : s	3 : 23	2 : 42	2 : 15	1 : 56	1 : 41 1 : 30
Rate of descent/GS	ft/min	410	513	615	718	821 923

Intentionally Left Blank