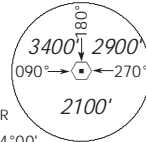


**INSTRUMENT APPROACH CHART - ICAO**

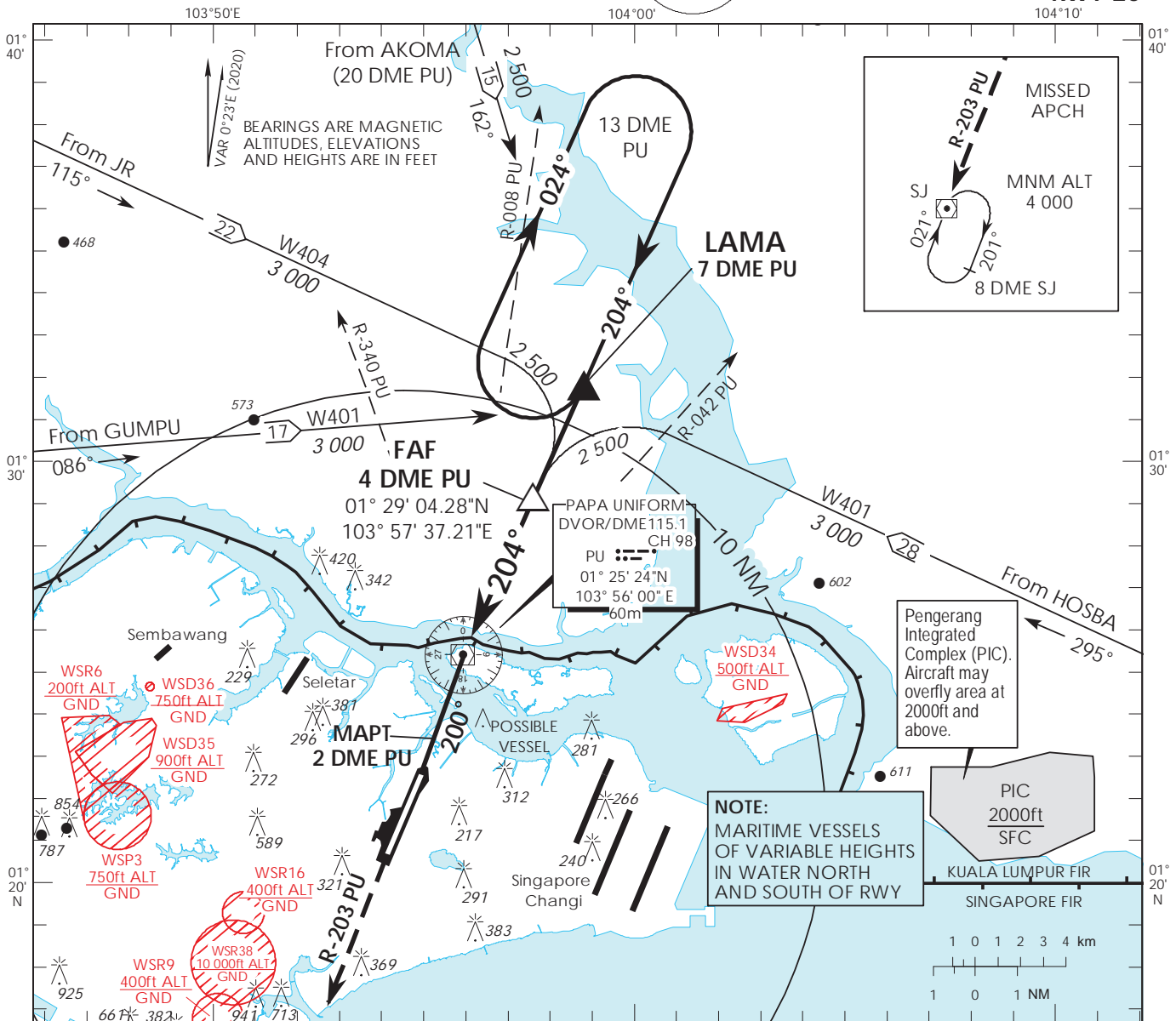
**AERODROME ELEV 65ft**  
HEIGHT RELATED TO  
AD ELEV - 65ft

MSA 25 NM  
from PAPA UNIFORM DVOR



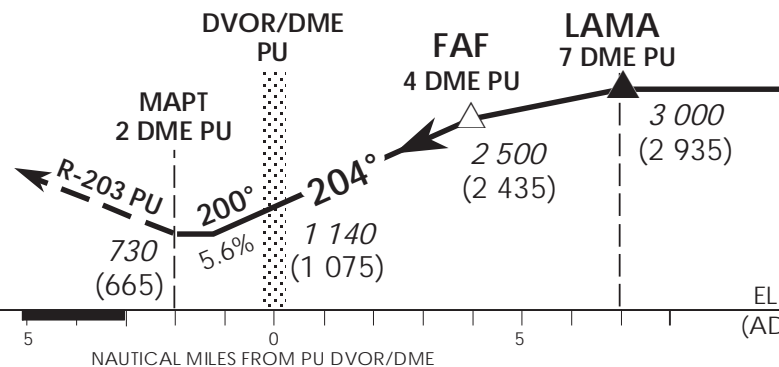
APP 124.05  
119.9  
126.025  
TWR 118.05

**SINGAPORE/PAYA LEBAR  
PU DVOR/DME  
RWY 20**



Transition Level : FL 130  
Transition Alt : 11 000

**MISSED APPROACH**  
Climb to 4 000ft on R-203 PU to SJ  
DVOR/DME and hold South right  
turn 021° inbound or  
AS DIRECTED BY ATC



OCA (OCH)					
Category of Aircraft	A	B	C	D	
Straight-in	730 (665)				
Distance	3 DME	2 DME	1 DME	PU DVOR/DME	1 DME
Altitude (Height)	2160 (2095)	1820 (1755)	1480 (1415)	1140 (1075)	800 (735)
Speed	knots	70	120	150	185
FAF - MAPT 6nm	min : s	5 : 09	3 : 00	2 : 24	1 : 57
Rate of descent/GS	ft/min	370	635	795	980

Intentionally Left Blank